

A vibrant photograph of two children enjoying a water slide. The child in the foreground is a young boy with a surprised expression, wearing a yellow life preserver and patterned swim trunks, leaping from a yellow inflatable structure. Behind him, a girl also in a yellow life preserver and blue swim trunks is walking on a blue inflatable path. The background features large green inflatable slides under a clear blue sky. The overall scene is bright and energetic, capturing a moment of summer fun.

# IDEA BOOK

**FOR 2026 AND BEYOND**

AN INSPIRATIONAL RESOURCE  
FOR PARKS AND REC PROS





# Play is life- changing

We transform the landscape of play.  
Our commitment is driven by the belief  
that play, when designed for everyone,  
brings out the best in all of us.

Because play, in its magical simplicity,  
makes us who we are.

To learn more visit us at  
[playlsi.com/play-is-life-changing](https://playlsi.com/play-is-life-changing)







**Just 20 minutes**  
of physical activity  
outdoors can  
**lower stress**  
**hormones like**  
**cortisol and**  
**improve mood,**  
especially in children  
and adolescents.\*

\*Frontiers in Psychology, 2020



To learn more, scan the code or  
visit [bicycle-playgrounds.com](https://bicycle-playgrounds.com)  
417-206-6816







## PARKS + REC

- 10 Comprehensive, Credible, And Innovative**  
*How the GEO Foundation makes the game of golf more sustainable*  
 By Hal Phillips

- 102 Bolster Boring Capabilities**  
*The advantages of horizontal boring attachments for mechanical earth drills*  
 By Joe Haynes

- 18 A New Way To Spike Engagement**  
*Why Spikeball belongs in every summer camp's programming*  
 By Andrew Luftglass

- 108 Finding The Answers**  
*A Parks and Recreation Professional's Introductory Guide To ChatGPT*  
 By Chris Austin and Mark Nagel

## CAMP BUSINESS

- 112 What If Something Happens?**  
*Taking the lead with insurance for camps and campers*  
 By Mark Ceslowitz

- 118 STAFF ADVANCEMENT Truth For Youth**  
*How camp programs serve as moral and interpersonal beacons*  
 By Christopher Thurber

## DEPARTMENTS

- 8 Editor's Note**  
 By Jefferey Spivey

- 122 Advertiser Index**

Volume 24 | Issue 2

COVER PHOTO:  
COMMERCIAL RECREATION SPECIALISTS

*"The biggest challenge is to fulfill your own ideas about yourself."*

—JUDIT POLGAR



@PRB (Parks & Rec Business)



@parksandrecbusinessmagazine



@PRB\_Mag



@PRB+





**LIGHTER**

than the competition

**FASTER**

than you've ever gone before

**SMARTER**

than the average manual vacuum



learn more at [hammerheadvac.com](http://hammerheadvac.com)



# REDEFINING OUTDOOR SPACES

**Playspaces are for more than just play.** They unite, challenge, excite and move people in so many ways. Each design detail brings more children into play, creates lasting bonds and fosters a sense of pride in the community. Because outdoor spaces are more than spaces – they're where play, design and community meet.

Join Our Movement at  
[bciburke.com/play](https://bciburke.com/play).

**Burke**  
PLAY THAT MOVES YOU.



© BCI Burke Company 2025 | 800-266-1250









## Editor's Note

**Jefferey Spivey** | jefferey@northstarpubs.com | (866) 444-4216 x221

# Rediscover The Wow

This past June, the results of an MIT study showed that regular ChatGPT use may erode a person's critical thinking skills. Three groups of subjects (54 people in total, aged 18-39) were asked to write SAT essays using either ChatGPT, Google's search engine, or nothing at all. The ChatGPT group was the worst-performing of the bunch, with the lowest brain engagement throughout the study—they simply cut and pasted their essays by the end of the observation period.

Do I bring this up as an argument against generative AI tools like ChatGPT? Not necessarily. The tech is advancing so quickly (and becoming so commonplace) that it's a fool's errand to denounce it. Not to mention, there are several impressive applications. But the MIT study does serve as a cautionary tale.

Many of us turn to programs like ChatGPT, Gemini, Claude, and so on to help manage our ideas. Whether we need to clarify a murky concept or have no concepts at all, AI promises to help—and to do so efficiently.



The risk is that, by outsourcing and streamlining our thinking, we start to rely on software for our ingenuity instead of our lived experiences and uniqueness. Recall any brainstorming session you've attended. Even if a mind-blowing solution failed to surface, the conversation likely moved in exciting and unexpected directions. And what made that synergy possible wasn't

a chatbot. It was group interaction, real-time inspiration, a-ha moments.

Bold, new ideas aren't always easy to come by. But when we produce them, either alone or with a team, there's a sense of pride. If we give away that power to tools like ChatGPT—and reduce or lose the ability to think through complicated problems—where do we find that pride? What do we do when the tools aren't available? Where's the fun in that?

This issue of *PRB+*, our annual Idea Book, is the antidote. We've pulled together products and services from the best vendors in parks, rec, and camp, all designed to spur you to action. You may not be able to enter a prompt about a playground and get an equipment list in a few seconds. But you can get inspired to build that list yourself—see colorful, dynamic images, learn about real-world applications, and get contact details to take the conversation off the page.

We know how much fun it is to spark ideas and begin the subsequent journey of turning those ideas into reality. When you can share a jam-packed issue like this with everyone in your department, it's even more enjoyable. So, put this Idea Book to work. Get informed, chase your inspiration, and rediscover the wow of people-focused ideas.

**Jefferey Spivey**  
Editor

**PRB+**  
MAGAZINE

PRBPlus.com

### Corporate / Editorial Address

Shipping/Mailing Address  
P.O. Box 2910, McCall, ID 83638  
Phone: 866-444-4216  
Fax: 866-554-4344  
Email: info@northstarpubs.com  
www.PRBPlus.com

### Production

Phone: 866-444-4216 x241  
Email: al@northstarpubs.com

### To Update Subscription Information

Visit [www.PRBPlus.com](http://www.PRBPlus.com)  
and click Free Subscription link  
or call 866-444-4216 x224  
or email [circulation@northstarpubs.com](mailto:circulation@northstarpubs.com)

### PRB+ Magazine

Publisher  
**Rodney J. Auth**

Editor  
**Jefferey Spivey**

Associate Editor  
**Stan Sever**

Creative Director  
**Al Holappa**

Graphic Designer  
**Danielle Beattie**

President  
**Rodney J. Auth**

Secretary  
**Carol Auth**

### Sales

Advertising Manager  
**Rodney J. Auth**  
866-444-4216 x226  
[rodney@northstarpubs.com](mailto:rodney@northstarpubs.com)

Advertising Sales  
**Theresa Ewald**  
866-444-4216 x239  
[theresa@northstarpubs.com](mailto:theresa@northstarpubs.com)

*PRB+ Magazine* (ISSN 1539-9990), Copyright © 2025 by Northstar Publishing, Inc. is published monthly (12x) by Northstar Publishing, Inc., 310 E Lake St, McCall, ID 83638. Business and Editorial Offices: 310 E Lake St, McCall, ID 83638, Accounting and Circulation Offices: Northstar Publishing, Inc., 310 E Lake St, McCall, ID 83638. Call (866) 444-4216 to subscribe. Periodicals postage is paid at McCall, ID, and additional mailing offices (if applicable).

POSTMASTER: Send address changes to Circulation Manager and PO Box 2910, McCall, ID 83638.

All items submitted to *PRB+* and Northstar Publishing, Inc. become the sole property of *PRB+* and Northstar Publishing, Inc. and cannot be reproduced without the written consent of the publisher. Advertisers and/or their agencies assume all liabilities for printed advertisements in *PRB+*. Opinions expressed in *PRB+* may not necessarily reflect the opinion of the magazine, its management, and/or its advertisers. Letters, pictures and manuscripts welcome. Letters (both to writers and to editors) are the sole property of the magazine and may be reprinted in part or whole.





**PUBLIC  
RESTROOM  
COMPANY**

Building Better Places To Go.™



**Come see us at NRPA  
Booth # 811**

# Designed exclusively to fit *(your park name here)*

At Public Restroom Company, we understand that one design does not fit all. That's the beauty in our modular design approach, every restroom floor plan is flexible and customized to the specific needs of your location. So if you need extra storage space or maybe a concession stand, let's talk. If you want the building's exterior to look a certain way, we have you covered. Let's make your vision a reality.



**VANDAL RESISTANT**



**BETTER VENTILATION**



**LOW MAINTENANCE**



**CODE COMPLIANT**

RESTROOMS | CONCESSIONS | STORAGE | SHOWERS | SPECIALTY BUILDINGS



[www.publicrestroomcompany.com](http://www.publicrestroomcompany.com)

**(888) 888-2060**





By Hal Phillips

# ***Comprehensive, Credible, And Innovative***





## How the GEO Foundation makes the game of golf more sustainable

**E**very time folks think they've wrapped their heads around the scope of transformation here at municipally owned Corica Park Golf Course (in Alameda, Calif.), there's another spasm of revitalization and innovation—all of it sustainable, none of it a burden to taxpayers.

In March, the 45-hole facility rechristened the North Course, the subject of a renovation from Robert Trent Jones, Jr. The architect, based in nearby Palo Alto, equipped this 98-year-old track with drought-tolerant Santa Ana Bermudagrass—a hybrid that goes dormant in winter—minimizing water usage, while creating superior year-round playability. Reconstruction of the bunkers included harvesting and deploying artificial turf from the old Oakland Raiders practice facility. The course repurposed sand and soil from excavations at nearby building sites, “capping” all 18 holes with 6-12 inches of sand (40,000 tons) for better water retention and drainage capability.

Later this year, the facility hopes to achieve sustainability certification from the GEO Foundation for Sustainable Golf. As recently as 2012, the entire facility struggled with cost overruns, its courses in disrepair. Today, under the leadership of Greenway Golf Associates, it's a national model.

“We're on a 50-year lease—a ground lease, which gives us time to thoughtfully invest in the facility and transform this wonderful property into a vital asset that benefits the entire community,” says Umesh Patel, CEO of Greenway Golf, the third-party operator at Corica Park GC.

Farming out course operations to third parties is neither new nor innovative. But giving said operator a 50-year window to realize its vision and turn a profit in the process? That is different, and it made all the difference in the East Bay. The timeframe is the key enabler, in fact. Some third-party operators may have a 10-year contract with a municipality, but most are 3-5 years. In that scenario, all too often, brief engagement windows make profits even more unrealistic. Typically, municipal operators resort to austerity measures to make the numbers work.

“If we succeed,” Patel explains, “we have 50 years to implement our vision. When you give managers or operators 3 years, they don't have





the luxury of doing what they might choose to do, all things being equal. How is a private company with a 3-year lease going to make meaningful investments? By cutting costs and not fixing anything... With a 50-year horizon (now it's 40 years), all parties are served when that vision includes running a sustainable business, in a sustainable way.

"This is open greenspace, and we play golf here. The majority of our time is dedicated to golf—but what else can we do to ensure the land serves the entire community? Access to space and sport creates great opportunities to foster sustainability *and* provide access to outdoor recreation and other activities for everyone."

For their environmental and sustainability work, Greenway and the team at Corica Park GC are working with the GEO Foundation, the international not-for-profit based in North Berwick, Scotland. The programs GEO provides are being deployed worldwide, from municipally-owned outfits like Corica Park to private clubs to professional tours. For example, the PGA Tour works with the GEO Foundation to help foster a substantive sustainability commitment across its operations, including its network of TPC facilities.

## Greening The Green

**F**ounded nearly 20 years ago as a pioneer in what has become the sport and sustainability movement, GEO ([www.sustainable.golf](http://www.sustainable.golf)) is dedicated to helping the golf industry navigate and embrace sustainability across the amateur and professional game by providing strategies, industry-wide solutions, and a credible certification label. Some golf-centered environmental programs concentrate on the course alone. GEO Certified® status is achieved by the entire facility operation.

The foundation is also dedicated to what founder and Executive Director Jonathan Smith calls "a comprehensive, credible and innovative approach to sustainability, via tailored platforms accessible to golf facilities of all types—all aimed at making sustainability more practical and impactful." GEO partners with national and regional golf associations, professional tours and tournaments, and even individual professional players.

GEO Certified® courses are not certified by the foundation itself. Instead, a separate arm of the organization makes the determination, based on essential findings from independent verifiers who visit the property.

The first step at Corica Park, and the first step toward facility certification, was going through checklists of course-maintenance operations for both the North and South courses, plus the 9-hole executive course. Again, GEO doesn't certify courses, but rather entire facilities. So, this benchmarking process extends to the clubhouse operation, too, inclusive of the food and beverage department. According to Patel, it also helped the Corica Park team see all the good work that was already being done and spot ideas for the future.

It's a worthwhile undertaking, says Smith, to understand how facilities are currently performing. Once that information has been added to GEO's OnCourse dashboard, golf facilities can more easily see where they can reduce resource consumption—and cost—and add more value to nature and adjacent communities. The program also comes with an annual Sustainable Golf Scorecard report, which captures key data and trends in colorful charts and infographics.

"GEO's analytical dashboard is amazing, how it measures, monitors, and monetizes all these practices," Patel says. "We don't expect to be perfect on day one, but we're starting this journey, and the people at GEO have proved to be wonderful sounding





boards. They have decades of experience in golf. They are amazing partners for us. They've already guided us in other best practices and have a blueprint they have refined and evolved over decades—one we could never develop internally, ever. We are really looking forward to taking the next steps.”

The foundation advocates for a golf facility's sustainability in three major areas: nature, resource management, and community. In each respect, Greenway and Corica Park have made sustainable headway well before certification. “We tend to look at things in a slightly different way,” Patel says. “At the same time as we want to ensure our golfers get the best playing conditions, we also want to find innovative ways to use our open greenspace.”

For example, after launching a pilot program in May 2024 to mark Mental Health Awareness Month, the Corica team now offers year-round, well-being workshops aimed at activating the golf course as a space for mental health and relaxation. Expert practitioners lead sessions in art therapy, music therapy, and mindful movement, including yoga. All this takes place in a secluded private practice area on the 9-hole executive course and other communal spaces across the facility.



# Pilot Rock®

## Enjoy the Outdoors™

Across our different product lines we offer hundreds of choices in style, size, features, materials and colors.

Commercial quality products able to withstand years of use and exposure.

*Made in the USA since 1959.*

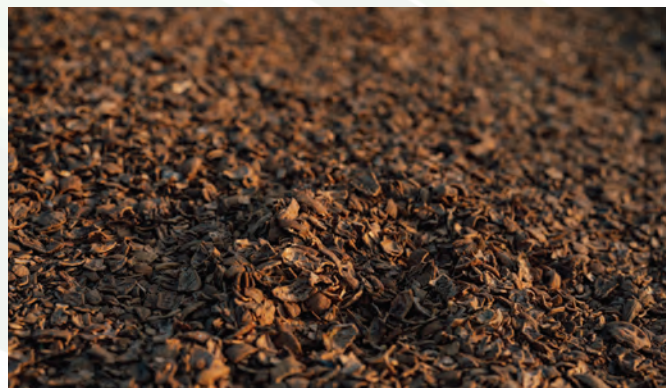


RJ Thomas Mfg. Co., Inc.  
Cherokee, Iowa  
800-762-5002  
[www.pilotrock.com](http://www.pilotrock.com)  
[customerservice@rjthomas.com](mailto:customerservice@rjthomas.com)





**BEFORE**



**AFTER**



These curated workshops are designed to offer community members the chance to reconnect with nature, unwind, and find balance outdoors—benefits that golfers enjoy every day. In June, Corica Park will host its fifth annual On The Green Summer Camp for underserved youth, provided at completely no cost and including meals and transport for over 200 kids. To date, the program has provided more than 10,000 hours of outdoor recreation to boys and girls who lack access to outdoor recreation; it has served roughly 8,000 meals during the summer months when the school lunch programs many rely upon are not available.

These are examples of sustainable community. Other initiatives are more recognizably golf- and environment-centered, but always with a twist. Like replacing concrete cart paths with 100 tons of crushed, biodegradable, upcycled walnut shells. Think gravel paths, only topped with walnut hulls.

“Nearly 6 billion pounds of hull waste are generated every year in California alone, with limited practical application. By diverting secondary agricultural byproduct to create an ecologically sustainable cart path surface, we’re working to reduce our carbon footprint,” Patel says. “We experimented with shell grinds and cart path depth on holes 15 and 16 of the South Course in order to determine final specs. All 36 holes of the North and South courses are now lined with walnut shells. We are exploring natural sealants to bind the surface, as we continue to refine the application.”

### ***A Sustainable Twist***

**G**reenway Golf Associates started out, early in the millennium, as a contract course-maintenance company that moved into project work, renovations, and eventually third-party course management. At its peak, the firm managed more than a dozen courses, some private, some municipal. By 2007, the courses at Corica Park were in poor condition after many years of deferred capital/maintenance investment. Eventually, the city put out an RFP to solicit third-party management proposals, and Greenway responded with an ambitious plan to revitalize the property—and rebuild both the South and North courses in the bargain. With the security of a 25-year lease, the South-Course renovation proved rather astounding. Rees Jones delivered a firm, fast Australian Sand Belt homage, and East Bay golfers flocked to play it.

Patel, an investment fund manager by trade, was not involved in this first phase. At all. But he lived nearby, and soon his kids began playing at Corica Park. He was smitten.

“I was blown away as to what the South Course had become,” says Patel, who was particularly taken with the new, underground system that captures and stores all rainfall, irrigation, and urban run-off for future course use (a system that has been significantly enlarged with



## Green Light Customized Entrance and Directional Signs

Custom-Built by Landmark



LANDMARK  
STUDIO DESIGN

1-888-839-3853  
LandmarkStudio.com



First impressions for parkgoers can make a big difference in creating a warm, relaxing atmosphere. That's why it makes sense to green light Landmark's entrance and directional signage. Made sustainably from GreenCircle-certified HDPE recycled plastic, each one is available in a variety of shapes, sizes, and logo and text options.



Scan to start customizing now. Visit Landmark at the upcoming NRPA Annual Conference, booth #1245, to discuss your needs!



## Buy Lockers Factory Direct!

- Large Inventory
- Fast Shipping
- Design Assistance
- Volume Discounts

Scan to request catalog



Salsbury Industries  
18300 Central Avenue, Carson, CA 90746-4008  
salsbury@lockers.com • www.lockers.com

Visit Us at [www.lockers.com](http://www.lockers.com)  
or call us at 1-800-562-5377







renovation of the North Course). “I didn’t know about the Rees Jones renovation. I’d seen the prior course for 20 years, and now it was this magnificent *new* course minutes from my house.

“Greenway and Rees had built this amazing environmental asset. Both courses are very close to the water table. They raised the entire South Course 4 feet! Something we eventually had to do on the North, too.”

How best to deploy both assets? At Corica Park, the answer seems to be daily-fee, public-access, everyday golf of a very high quality at an affordable price

But always with a sustainable twist. Again, at this writing, Corica Park GC has not yet applied to become GEO Certified®, but Greenway has already amassed a sizeable, quite ingenious track record on this front. During renovation of the North Course, it did indeed repurpose artificial turf from the Oakland Raiders’ former practice facility to line the bottom of RTJ Jr.’s new bunkers. When the Oakland Roots, the city’s USL Championship soccer team, built a new, natural-turf pitch, Corica took 2,900 artificial-turf panels and used them to build the walls of Scottish-style revetted bunkers on the North.

When Greenway sand-capped the North Course, it did more than repurpose sand and soil. Because Corica Park is located much closer to the building sites than the normal dump sites, the carbon footprint of the sand-bearing trucks was substantially reduced.

In 2023, Corica Park dedicated the equivalent of 30 acres of non-golfing greenspace to actively nurture biodiversity. Greenway Golf’s new sustainability manager is slowly transforming these spaces with new pollinator habitats that nurture critical wildlife. As one example, the facility hosted an educational event with Pollinator Posse, a nonprofit dedicated to creating meaningful space for

pollinators in Northern California. As part of the event, the facility’s Sundays On The Green youth program learned about the critical role of pollinators and hit clay balls filled with wildflower seeds off the first tee of the executive nine—into a newly created protected habitat.

Up next: a holistic regenerative landscaping plan (soil testing, water testing, development of baseline metrics), which will help identify and prepare key sites on the entire property for all future plantings.

Overall, since construction of the North Course commenced, Greenway has removed exotics and incorporated native keystone plants to nurture habitat for 103 species of identified birds, pollinators, and other wildlife. The operator is also knee-deep in its exploration of biochar—the flaky, jet-black stuff that gathers at the bottom of a gas grill—as a carbon-rich soil amendment.

“These 3,400 municipal courses [in the U.S.] are precious gems,” Patel says, sounding nothing like an investment manager. “They came before these cities did, originally built on the edges of these population centers. We’re very close to the airport here. But the cities often grew up around them, so these courses represent valuable open greenspace that must be preserved and *used* by the whole community.

“Since reopening the South Course, we’ve seen a huge new traffic in birds. Then, three years ago, a pair of bald eagles came and built a nest. We have a gentleman who lives next door, a birdwatcher and photographer, who wanted to take pictures. We said, ‘Of course.’ Now he leads bird walks out there, and they’ve identified over 100 bird species.” **PRB+**

**Hal Phillips** is Managing Director at Mandarin Media, Inc. He can be reached at [hphillips@mandarinmedia.net](mailto:hphillips@mandarinmedia.net).



# Testing Finds No Detectable PFAS In FieldTurf Field—Outperforming Even Natural Grass

By FieldTurf

A recent study looking at PFAS in turf fields installed at two Northern California high schools found they contained no detectable PFAS above state and EPA soil-screening levels. At one of the fields, no PFAS were detected at all.

“Our Proof is in the ground” isn’t only a tagline—it’s a foundational principle at FieldTurf. We show you the numbers behind the words because we believe true impact comes from transparency.

As PFAS remains a topic of public and regulatory concern, FieldTurf commissioned this study, led by environmental-consulting firm Gradient, to help organizations and communities navigate the conversation on field options with facts and transparency, not flashy claims that have led experts to question the deceptive tactics of some manufacturers. While others talk about what they plan to or can do, FieldTurf is delivering results.

## Summary Of The Study And Results

Gradient’s study of PFAS compounds used U.S. EPA Method 1633 to evaluate 40 individual PFAS compounds in the fields before and after construction of new FieldTurf fields. One field was originally natural grass, and the other, an older synthetic system with SBR rubber. Both high schools replaced their aged surfaces with new FieldTurf fields, installed using natural infills like cork, sand, and olive pits. Testing results showed one new FieldTurf field with no detectable PFAS compounds, and trace levels at the other new field.

*All results were below EPA and/or U.S. state soil-screening limits and/or within normal background ranges.*

TABLE 1. COMPARISON OF SAMPLING RESULTS TO SCREENING LEVELS

SCREENING LEVEL (PPB)	SCREENING LEVEL (PPB)*	SCHOOL A FORMER*	SCHOOL A REPLACEMENT*	SCHOOL B FORMER*	SCHOOL B REPLACEMENT*
PFPeA	250	ND	0.12 J	ND	ND
PFFuA	250	0.14 J	ND	0.14 J	ND
PFFuA	250	0.071 J	ND	ND	ND
PFOA	0.0185	0.27	ND	0.31 J	ND
PFNA	19	0.13 J	ND	ND	ND
PFDA	250	0.1 J	ND	ND	ND
PFOG	25	0.11 J	ND	0.41 J	ND
PFOG	0.83	0.33	0.28 J	0.52	ND
NEFOSAA	0.83	ND	ND	0.13 J	ND

Notes: ND = non-detect, detection limits vary by analyte and matrix; J = estimated concentration between the method detection and reporting limit. Red = Above screening limit. (a) Screening Level Source: (b) Results are the maximum reported values for any infield or outfield composite samples. (c) Results are the maximum reported in any carpet or infill samples.

As part of its ongoing transition in fiber production, FieldTurf is seeing clear outcomes. The testing results highlight the progress made through material innovation and purpose-led design—with no detectable PFAS found in recently extruded fibers and only trace levels present in legacy materials. It’s further proof that FieldTurf systems are safe, and the company continues to change the game—not only in performance but in product leadership and sustainable innovation.

## A Closer Look At PFAS In Natural-Grass Playing Fields

Natural grass is not immune to the presence of PFAS. In fact, a 2024 self-funded whitepaper by environmental-consulting firm Woodard & Curran, titled “PFAS in Massachusetts Background Soils,” assessed the background occurrence of PFAS in soil. The study analyzed 100 surface-soil samples across undeveloped sites in Massachusetts, finding measurable concentrations of PFAS in 88% of samples—nine PFAS compounds were detected, and more than half exceeded the strictest state soil-screening levels. This study, and many others, show that atmospheric transport of PFAS has the potential to impact soil, even in remote areas.

The results of this background soil study are consistent with Gradient’s high-school field study, which found that prior to replacement, the natural-grass field at the Northern California high school contained higher PFAS levels than both the existing synthetic turf and the two newly installed replacement systems. This reinforces the finding that natural-grass fields may contain higher levels of these PFAS compounds than those in a FieldTurf system.

## Committed To Investing In Extensive Testing And Expert Consultants

FieldTurf has made significant investments in research, laboratory testing, and third-party consultation to ensure our systems are grounded in science and transparency. This commitment isn’t new—it’s a foundational part of how we operate and how we’ve earned our customers’ trust over the past 25 years.

In addition to the Gradient study, FieldTurf has conducted extensive lab testing across its key products to identify possible PFAS compounds that could be present as pre-installation ingredients. The accredited third-party lab tested FieldTurf products for more than 70 PFAS compounds, with the following results:

- No key products contained detections above U.S. EPA screening levels.
- Most PFAS detections were below reporting limits or could be attributed to lab background.
- A simulated worst-case exposure test (TOP assay) also had no detections above U.S. EPA screening levels, confirming product integrity.

“We’re here to help communities make informed decisions with real data and expert support. For over 25 years, we’ve invested in doing things the right way, and this study is a powerful validation of that approach,” says Darren Gill, Executive Vice President of FieldTurf. “Our holistic approach to Protect People & Planet is stitched into the fabric of how we do business and sits at the heart of our day-to-day decision-making.”

Leading solutions delivered by leading builders. FieldTurf is part of Tarkett Sports, a world leader in sports construction and surfacing, providing architectural design, full-scope construction services, and a comprehensive portfolio of industry-leading sports-surfacing solutions.





By Andrew Luftglass

# A New Way To **SPIKE** Engagement

## *WHY SPIKEBALL BELONGS IN EVERY SUMMER CAMP'S PROGRAMMING*

**A**ny leader who has spent time around a playground, beach, or park has likely seen a circle of kids gathered around a small, trampoline-like net. The players dive, laugh, and slap a small ball down with remarkable energy. The activity is Spikeball, and it's more than a trendy game. It's perfect for camps and recreation departments in search of fun games that blend fitness and social engagement.

At summer camps and in youth groups across the country, Spikeball has become a go-to game for structured tournaments





and spontaneous free play. Described as “if volleyball and foursquare had a baby,” this 2-on-2 game only requires a Spikeball net, a ball, and four players (two teams of two). Players start by serving the ball down onto the net so that it ricochets up at their opponent. Similar to volleyball, the returning team then has up to three hits (think bump, set, spike) to return the ball onto the net. The rally continues until a team fails to return the ball onto the net within its three touches.

Spikeball engages kids of all skill levels, requires minimal setup, and can be played nearly anywhere. But beyond its appeal to campers, it also delivers measurable benefits for physical development, community building, and camper-counselor connection—making it a smart investment for any program looking to offer healthy, high-energy play.

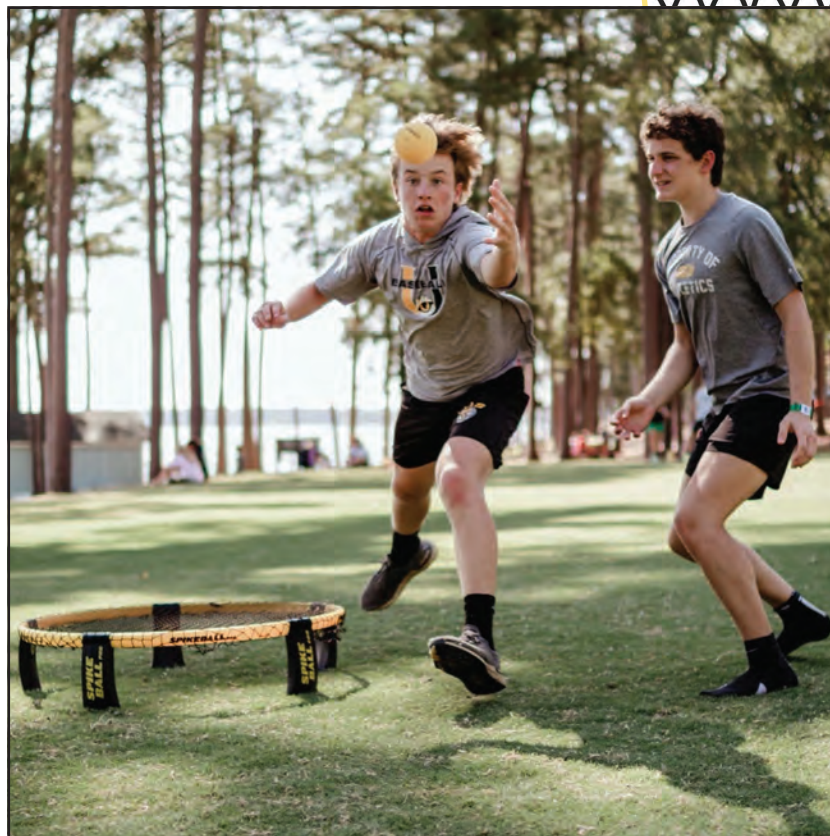
## WHY SPIKEBALL WORKS FOR CAMPS AND RECREATION PROGRAMS

### 1 A Fitness-Forward Game With Real Athletic Payoffs

Spikeball isn’t only fun. It’s functionally rich. Certified Strength and Conditioning Specialist Matthew Guffey, who owns Victory Submission Strength in San Jose, Calif., and has a deep background in training high-level athletes, frequently uses Spikeball in his programming. “You can use Spikeball to get kids moving, thinking, and reacting—all without them realizing they’re training,” he says.

The infinite potential for variables within a single game forces players to respond quickly and precisely, building brain-body connections that support well-rounded athletic development. “There’s an element of proprioception—where your body is in space. Then there’s agility, where you’re reacting to variable dynamics. And finally, there’s hand-eye coordination. Your brain is constantly figuring things out on the fly,” Guffey says. He adds that it’s one of the few games that provides these benefits without feeling like structured exercise.

“The biggest thing is just it’s fun,” Guffey says. “And the more fun something is, the more likely



people are to adhere to it. And the more people are likely to adhere to it, the better results you get.”

Spikeball is what coaches and trainers refer to as a donor sport—an activity that develops physical attributes transferable to other sports. The basic idea is that the best athletes are well-rounded. They don’t specialize in only one sport. It’s a good guide for athletes, but also for general fitness. Individuals should find ways to train their bodies to move in a variety of ways. Guffey, who previously trained athletes at USA Hockey, says Spikeball reinforces agility, reaction time, and spatial awareness in a dynamic, unstructured way that builds real-world athletic instincts.

### 2 A Camp Favorite That Draws A Crowd And Builds Community

At Silver Birch Ranch in Wisconsin, Spikeball tournaments are more than recreational events. They’re weekly rituals.

“It’s a big part of our week for sure,” says Silver Birch Ranch Program Manager Kole Bogdonovich. “At lunchtime, campers can sign up for dodgeball or Spikeball. And we’ll always have a big crowd for Spikeball.”

The tournaments are camper-led and highly visible: sign-up sheets are posted in the





dining hall, brackets are made by the program staff, and winners are announced during chapel. “Whoever wins gets a little prize, some points they can use for rewards later in the week,” Bogdonovich says. “It’s nice to have Spikeball as one of those tournaments every week because it’s always a big hit.”

But the appeal goes far beyond gameplay. Spikeball creates a social space that helps campers and counselors build real, organic relationships. “It’s not even the athleticism part of Spikeball that really is the biggest plus side of it,” says Bogdonovich. “It’s just the fact that you’re all gathering—whether you’re actually playing at the net or just watching your friends or church friends play.”

That casual, magnetic atmosphere fosters meaningful social moments. “You can just have real conversation, cheer people on, be an encouragement,” he says. “That’s the big draw.”

And in faith-based camps or youth ministries, where much of the programming is spiritually focused, Spikeball offers something unique: a non-spiritualized social activity that still promotes connection. “A big thing is you don’t have to over-spiritualize everything,” Bogdonovich says. “There are other things, like athletics, that can bring people together. Spikeball does that in a very natural way.”

### 3 Easy To Set Up, Easy To Start

One of Spikeball’s strongest selling points is its portability. A full set fits in a backpack and weighs under three pounds. It can be played on grass, sand, pavement, or even indoors with minimal adjustments. Camps don’t need a dedicated court or permanent structure—just open space and willing players.

This flexibility makes it ideal for both planned and impromptu programming. Whether it’s a rainy-day rec hall session or an all-camp tournament on the lawn, Spikeball adapts to the moment. And as Bogdonovich’s team has discovered, the game thrives when it’s simply available for campers to find. “We always have it out,” he says. “Campers pick it up and start playing without needing us to organize anything.”





## HOW TO ADD SPIKEBALL TO A PROGRAM

The following are five practical ways camp and recreation leaders can incorporate Spikeball into their programming lineup:

### 1 Launch With A Camp-Wide Demo

At the start of a session or season, organize a Spikeball demonstration to get everyone acquainted. Have staff model the game during a campfire event or opening rec block. Keep the rules light, highlight the fun, and encourage every camper to try it.

**Pro Tip:** Appoint a few counselors as “Spikeball Ambassadors” for the first week to lead games, explain the rules, and help new players feel welcome.



### 2 Run Weekly Tournaments (Big Or Small)

Structured Spikeball tournaments give campers something to look forward to. A simple bracket can make for an energetic afternoon. Larger camps can scale up with semifinals, team uniforms, or even camp-wide championships.

# WZ SERIES FLEX DECK ZERO TURN MOWERS

DESIGNED TO CUT THE MOST CHALLENGING TURF ON THE PLANET





**Our Complete Line of WZ Series Flex Deck Zero Turn Mowers**

<b>WZ400 61" / 73" Flex Deck</b> Gas / Diesel Commercial Starting at \$24,899*	<b>WZ600 80" Offset Side Reach Flex Deck</b> Starting at \$58,899*	<b>WZ800 100" Wide Area Flex Deck</b> Starting at \$63,899*	<b>WZ1000 120" Wide Area Flex Deck</b> Starting at \$69,899*
--	---	--	---

Lastec **flex deck zero turn mowers** feature three, four, or five independently flexing decks with **up to 24° of total up/down motion**, patented **low maintenance belt-driven decks**, and zero turn maneuverability. In addition to the **massive 120" wide WZ1000** being one of the world's largest flex deck zero turn mower, Lastec offers a **complete range of flex deck commercial grade zero turn mowers** for commercial landscapers, lawn care professionals, and golf courses. **Perfect the Art of Mowing with Lastec commercial mowers.**



**800.515.6798** [lastec.com](https://lastec.com)

f y x i n d

©2025 Lastec LLC \*Prices and specifications are subject to change.





Create themes to keep it fun: “Sunset Spike-Off,” “Backwards Hat Bracket,” or “Glow-in-the-Dark Games” (using SpikeBrite LED rims and glow-in-the-dark balls).

### **3 Use It For Cabin Vs. Cabin Or Color War Events**

Spikeball is perfect for head-to-head competitions during cabin challenges or color wars. Matches can be played relay-style

with rotating teammates or as mini-tournaments within the larger event.

For younger campers or less competitive groups, simplify the rules or focus on cooperative play to encourage participation without pressure.

### **4 Let It Live In Free-Play Zones**

Spikeball shines when it’s accessible. Keep a few sets available in common areas—near the rec field, outside the dining hall, or by the waterfront. Leaders will often see kids organize their own matches, rotate through players, and even invite younger campers in. This informal play builds leadership, inclusivity, and creativity.

### **5 Integrate Into Athletic Training Blocks**

For sports camps or rec departments with athletic programming, consider using Spikeball as part of warm-ups or skill-building stations. Guffey advises using Spikeball in the following ways:





Whether at camp, a recreation program, or an organized sport, Spikeball offers high-quality, unstructured athletic training and peer-to-peer connection.



- In place of a dynamic warm-up, especially for groups that arrive all at once.

- As a transition game between cardio and technical drills.

Just a few minutes of Spikeball can boost engagement before more demanding activities.

### **SPIKEBALL BUILDS FUN, FITNESS, AND FELLOWSHIP**

In today's camp and rec landscape, directors are constantly seeking activities that are active, inclusive, and low-barrier, but still fun enough to get kids off screens and into motion.

Spikeball hits the sweet spot.

It delivers serious fitness benefits without feeling like a workout, builds social cohesion, and it's one of the few games kids choose to play on their own, again and again. It's a ready-made recipe for camper enthusiasm, meaningful interaction, and moments of joy that don't need a curriculum.

Whether leaders run a public rec program or a faith-based camp, Spikeball brings people together—and that's the point. **PRB+**

*With over a decade of experience in writing, broadcasting, and media relations, **Andrew Luftglass** has enjoyed a wide-ranging career telling stories about sports, business, tech, and more. He is passionate about identifying and sharing impactful stories with diverse audiences.*



## **IMPLEMENTS TO FIT YOUR LIFESTYLE**

Whether you till and seed the city parks during the day, or mow your own property at night, Land Pride offers a complete line of labor-saving tractor-mounted grounds maintenance implements to tackle your chores and to fit your lifestyle.



MOWERS / CUTTERS / TILLERS / SEEDERS  
COMPACT DRILLS / DIRTWORKING TOOLS  
MATERIAL HANDLING / SNOW TOOLS





# IDEA BOOK

**FOR 2026 AND BEYOND**

We know parks and recreation professionals are on an endless quest to provide the very best leisure, entertainment, and wellness pursuits for their community members. Not only are we here to help you dream big, but we're giving you the ultimate resource to seek out the partners who can help deliver your vision. We call it our Idea Book. You'll call it your roadmap to success.





## Commercial Recreation Specialists

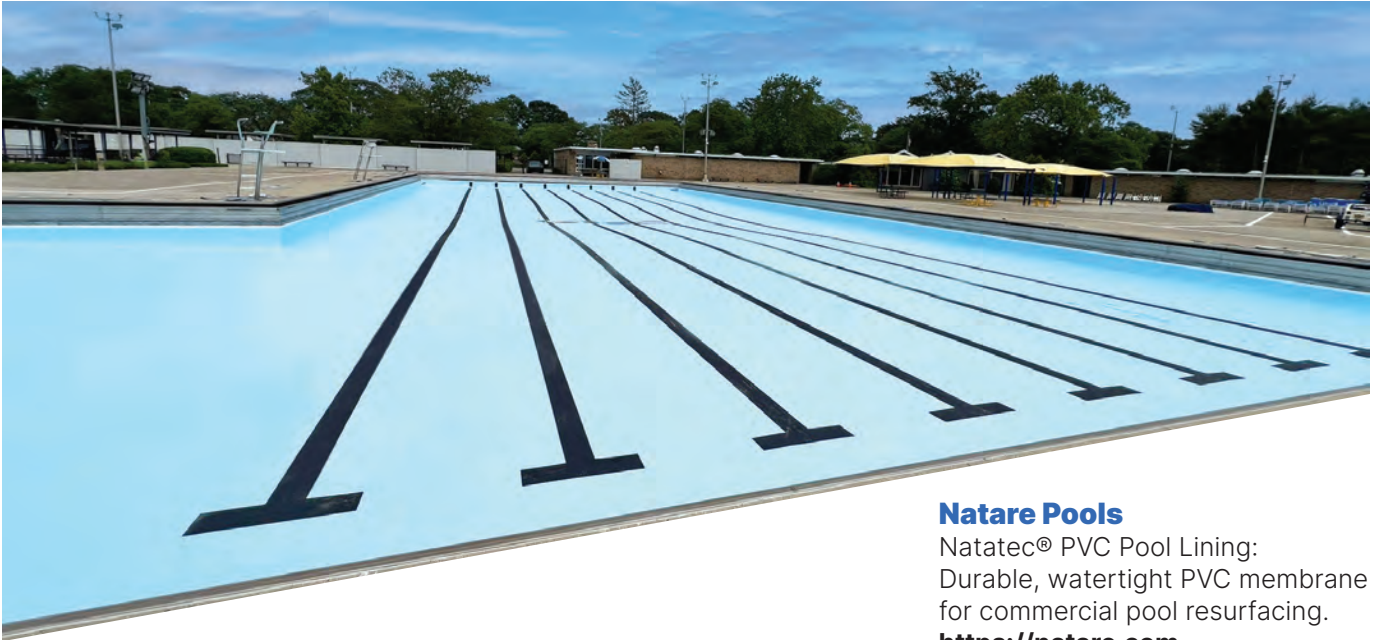
NEW Aqua Park—Modular floating obstacle courses offer family-friendly thrills for different skills.

<https://crs4rec.com>

See ad p. 41







### **Natare Pools**

Natatec® PVC Pool Lining:  
Durable, watertight PVC membrane  
for commercial pool resurfacing.

<https://natare.com>

See ad p. 71



### **Durable GreenBed**

Flower gardens enhance  
visual appeal and  
pollinators love them!

<https://durablegreenbed.com>

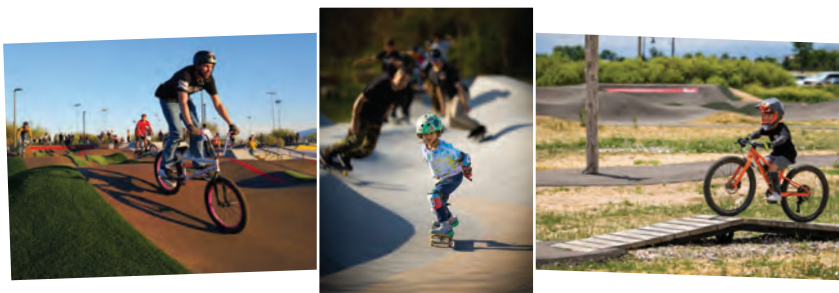
See ad p. 45





**American Ramp Company**

601 S. McKinley Ave.  
Joplin, MO 64801  
(417) 206-6816  
sales@americanrampcompany.com  
www.AmericanRampCompany.com



For over 25 years, American Ramp Company, skater-owned and operated, has been building world-class, action-sports facilities around the globe. As the only firm offering every action-sports product line, including bike parks and pump tracks, along with comprehensive branding services, ARC stands out for its unparalleled quality, selection, and credibility.



**American Swing Products, Inc.**

680 W. Nye Lane, Suite 201  
Carson City, NV 89703  
(800) 433-2573  
play@AmericanSwing.com  
www.AmericanSwing.com



The best-possible-quality replacement swings and playground equipment at low prices. Fast, dependable service. We put safety first. We now sell complete swing sets for everyone and special ADA swings. Many American-made products. Check our website for details.



**Ankored**

399 Bolyston St., STE 650  
Boston, MA 02116  
(508) 290-8363  
sales@ankored.com  
https://www.ankored.com



Get more coaches game-ready faster, reduce workload, and keep kids safe. Ankored automates coach onboarding with background checks, training, and certifications in one seamless system—cutting administrative work by 95% while improving compliance. Stop drowning in paperwork and start focusing on exceptional programs that serve more kids.





### **EP Climbing**

Outdoor Boulder by EP Climbing uses our Freeform surface, integrating natural features and handholds for the optimal climbing experience for all ages and abilities.

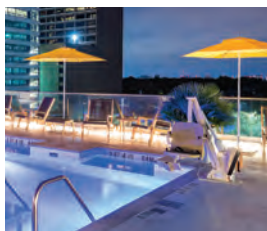
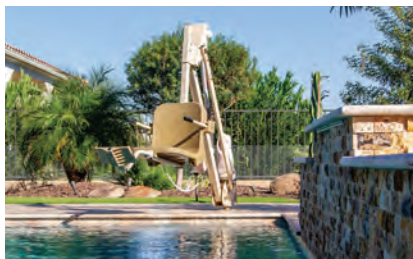
<https://epclimbing.com>

See ad p. 47





**Aqua Creek Products**  
 9889 Garrymore Lane  
 Missoula, MT 59808  
 (406) 549-0769  
 sales@aquacreek.com  
 https://aquacreekproducts.com



Aqua Creek Products manufactures innovative aquatic access solutions for people of all abilities. Handcrafted with pride in Missoula, Montana, featuring the only American-made, solar-compatible pool lifts on the market today. In-house powder-coating professionals offer an endless variety of color options! Call today to learn more.



**Aquatic Adventures International, Inc.**  
 (800) 970-2688  
 info2025@aquacycles.com  
 www.AquaCycles.com



Aqua-Cycle Water Trikes are fun, safe, durable, profitable and require little maintenance. Ideal for kids, teens, adults and seniors.

- Easy to Operate
- Built to Last
- Low Maintenance
- High Rental Profits
- Backed by Warranty



**Aquatix® by Landscape Structures**  
 1101 McKinley Parkway  
 Delano, MN 55328  
 (888) 438-6574  
 aquatix@playlsi.com  
 aquatix.playlsi.com



With nearly 40 years of experience, Aquatix is a leader in water features and spray park design, fabrication, and construction. In joining forces with Landscape Structures, our imaginative designs will continue to advance the world of dynamic water events—achieving new levels of chilling thrills, challenging interactive games, and inventive water-based activities. As leaders in visionary aqua play, Aquatix knows no boundaries when it comes to interactive water-based encounters, inventive escapades, and thrilling splash pad surprises for people of all abilities.



Sourcewell  
Awarded Contract  
#112624-WKR



### Walker Mowers H38i

The company's most powerful mower, featuring 38-horsepower, Delphi fuel injection, and impressive torque.

<https://www.walker.com>

See ad p. 97

### Nitterhouse Masonry Products, LLC

Concrete Log Parking Block.

[www.nitterhousemasonry.com](http://www.nitterhousemasonry.com)

See ad p. 73







1001 W. Oak St., Ste. 101  
Bozeman, MT 59715  
(406) 551-4098  
archasol@archatrak.com  
<https://www.archasol.com/>



Light your way. Innovative solar products for a brighter, safer, more sustainable, and closely connected world. Indestructible solar bollards, solar sign lights, unobtrusive pathway lighting, stylish bench seating, and solar charging park and campus workstations.



**Bears Playgrounds**  
7577 E. Main St.  
Lima, NY 14485  
(877) 807-7529  
info@bearsplaygrounds.com  
[www.bearsplaygrounds.com](http://www.bearsplaygrounds.com)



One-of-a-kind, bold, strong, built-to-last cedar log playgrounds. We offer natural playground structures for public use as well as independent events and outdoor classroom hardscapes. Call us today to create your own custom design.



**Belson Outdoors, LLC**  
627 Amersale Drive  
Naperville, IL 60563  
(800) 323-5664  
sales@belson.com  
[www.belson.com](http://www.belson.com)



Visit our website or call for a free catalog on the following products: picnic tables, benches, bleachers, bike racks, trash receptacles, camp stoves, fire rings, wash stations, barbecue grills, smokers, pit grills, mobile trailer grills, and more.









## Vision Fitness

Outfit your space with equipment designed for real-life use.

[www.visionfitness.com](http://www.visionfitness.com)

See ad p. 97







### **Sedi Connect**

A stylish, solar charging station and community hub.

<https://www.archasol.com/product/steora-cyclo-solar-bench-seat/>

See ad p. 31



### **Madrax**

Madrax bike racks offer durability, security, and style.

[www.madrax.com](http://www.madrax.com)

See ad p. 65





**Berliner**  
 96 Brookfield Oaks Drive  
 Greenville, SC 29607  
 (864) 627-1092  
[info@berliner-playequipment.com](mailto:info@berliner-playequipment.com)  
<https://berliner-playequipment.com/us/>



For over 50 years, Berliner has been the leading provider of fun, inclusive rope play. We focus on innovation by creating unique play experiences that go beyond traditional play, offering true challenge, excitement, and play spaces for everyone! Custom is standard at Berliner; let us help you create your next playground.



**Bison, Inc.**  
 645 L Street  
 Lincoln, NE 68508  
 (800) 247-7668  
[chris@bisoninc.com](mailto:chris@bisoninc.com)  
[www.bisoninc.com](http://www.bisoninc.com)



Since 1985, athletic directors, coaches, facility administrators, and equipment managers have relied on the good sports at Bison to provide safe, durable, innovative, and on-time products to fit their unique sports equipment needs. Our sporting goods equipment is proudly manufactured in the USA. Call or email us with your equipment questions!



**BLICK Art Materials**  
 695 US Hwy 150 E  
 Galesburg, IL 61401  
 (800) 828-4548  
[Orders@DickBlick.com](mailto:Orders@DickBlick.com)  
[DickBlick.com](http://DickBlick.com)



### Your Source for Creative Fun!

- Affordable pricing
- Vast selection of kids' art supplies
- Convenient class packs
- FREE lesson plans for all grade levels





### Modular Pumptrack USA

Modular pump tracks—transform any space. Fun, fitness, and flow!

[www.modularpumptrackusa.com](http://www.modularpumptrackusa.com)

See ad p. 67

### Salsbury Industries

Salsbury Industries offers a wide range of premier wood lockers in a variety of colors, styles, and sizes. Constructed of industrial-grade particleboard and covered with high-pressure laminate.

<https://www.lockers.com>

See ad p. 87







A WATTS Brand

**Bradley**

W. 142 N. 9101 Fountain Blvd.  
Menomonee Falls, WI 53217  
(800) 272-3539  
abby.heppe@bradleycorp.com  
www.bradleycorp.com



For over 100 years, Bradley has offered the most complete collection of commercial washroom products for the recreational market. From handwashing fixtures and showers, to solid plastic and phenolic locker storage systems and an array of durable restroom accessories, Bradley can meet all your commercial washroom needs.



**Broyhill Equipment LLC**

P.O. Box 475  
Dakota City, NE 68731  
(800) 228-1003  
craig@broyhill.com  
www.broyhill.com



The Broyhill Load and Pack 74DLX is a solid waste-handling vehicle designed for parks, beaches, and trails. It features a hydraulic grip that lifts containers from 26 to 90 gallons, handling up to 500 pounds, and can empty over 400 trash containers daily with a single operator.



**BCI Burke Playgrounds**

P.O. Box 549  
Fond du Lac, WI 54937  
(920) 921-9220  
info@bciburke.com  
www.bciburke.com



At BCI Burke, we design and manufacture innovative, fun, and engaging play, playgrounds, recreation, outdoor fitness, and classrooms that help everyone find the best of themselves through play and movement.

Founded in 1920 in Fond du Lac, Wis., our passion, mission and business is to bring Play That Moves You® to the communities we serve.

Join Our Movement and see how play can move you!







### Outdoorlink

Parks and rec area at night—soccer and beach volleyball.

<https://outdoorlink.com/parks-recreation/>

See ad p. 75



### Monarch Coin-Operated Devices

Coin, token, or push button meters for showers, outdoor lighting, and more.

<https://www.monarchcoin.com>

See ad p. 67







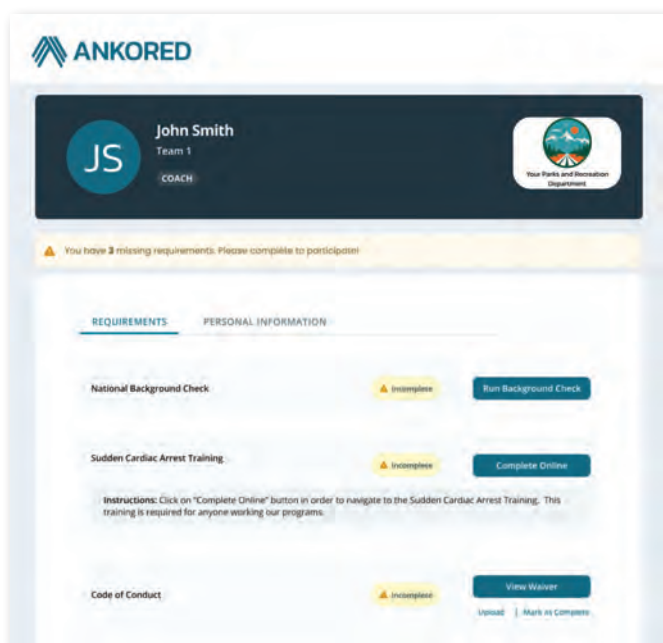
### **Percussion Play**

Nature-inspired outdoor instruments that bring music to open spaces.

**[www.percussionplay.com](http://www.percussionplay.com)**

See ad p. 75





## Ankored

Ankored eliminates the headaches of onboarding coaches and volunteers.

<https://www.ankored.com>

See ad p. 27



## SnapSports (DuraGrid)

DuraGrid is an ideal solution for dock and boat deck coverings—designed to protect surfaces, prevent splinters, and keep both people and equipment dry with its slip-resistant, self-draining design.

[www.duragrid.com](http://www.duragrid.com)

See ad p. 45



## Vac-Alert Industries, LLC

Vac-Alert SVRS Safety Vacuum Release System for pools and spas.

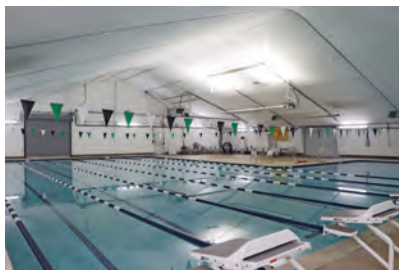
[www.vac-alert.com](http://www.vac-alert.com)

See ad p. 95

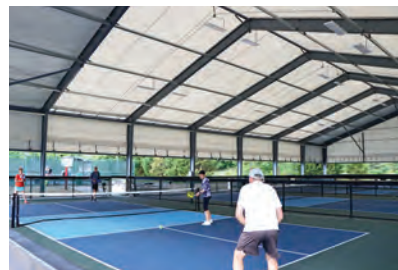




**ClearSpan Structures**  
 1395 John Fitch Blvd.  
 South Windsor, CT 06074  
 (866) 643-1010  
 trussinquiry@clearspan.com  
 www.ClearSpan.com



ClearSpan Structures designs, manufactures and installs the industry's finest fabric and metal building solutions. With over 40 years of experience, we can help with any recreation or athletics structural need.



**COMMERCIAL  
 RECREATION  
 SPECIALISTS**

**Commercial Recreation  
 Specialists, Inc.**  
 807 Liberty Drive, Suite 101  
 Verona, WI 53593  
 (877) 896-8442  
 info@crs4rec.com  
 https://crs4rec.com



Ready to make a lasting impact on your community? For over 25 years, Commercial Recreation Specialists has transformed parks across the country with Aqua Park inflatables, shade, pavilions and more! Our expert Recreation Specialists are here to help you find the best recreation solutions for your outdoor space—because we're serious about FUN. Learn more at crs4rec.com.



**Dog Wash Systems USA**  
 8642 US Hwy 20  
 Garden Prairie, IL 61038  
 (800) 537-8231  
 info@dogwashsystems.com  
 www.dogwashsystems.com



Dog Wash Systems, USA manufactured by CCSI International, Inc. has been the leading manufacturer of pet washes since 2009. Dog Wash Systems, USA has expanded its reach into a wide variety of industries including parks and recreation.





### **Berliner Seilfabrik—Lunia**

Lunia lifts kids' imaginations with exciting climbing abilities inside a hot air balloon!

<https://berliner-playequipment.com/us/productgroup/univers/lunia/>

See ad p. 35



### **ParknPool**

ParknPool's benches are essential fixtures in recreational spaces.

They contribute to the enjoyment of any outdoor activity.

[www.parknpool.com](http://www.parknpool.com)

See ad p. 75





**Dog-ON-It-Parks**

2211 37th St.  
Everett, WA 98201  
(877) 348-3647  
sales@dogonitparks.com  
www.dog-on-it-parks.com



Your dog park experts! As the first company in the U.S. to specialize in dog parks, we offer over 50 different agility components along with a wide range of furnishings, including pet fountains, benches & tables, fire hydrants and more. Contact us to help turn your dog park into a destination.



**DOGIPOT**

5340 Young Pine Road, Suite 8  
Orlando, FL 32829  
(800) 364-7681  
info@dogipot.com  
https://dogipot.com



DOGIPOT has the products to help keep parks and recreation areas free from harmful dog waste. DOGIPOT supplies the most economical and effective dog waste-management system to encourage pet owners, not maintenance staff, to eliminate dog pollution.



**Doty & Sons Concrete Products, Inc.**

1275 E. State St.  
Sycamore, IL 60178  
(800) 233-3907  
info@dotyconcrete.com  
www.dotyconcrete.com  
www.outdoorconcretegames.com



We offer a great selection of outdoor game products for parks and recreation areas. Products include concrete cornhole boards, Ping-Pong tables (four styles available), Ladder Toss, Foosball table, Disc-Connect (Connect 4) game, and game tables. We also make concrete furnishings: waste and recycling receptacles, benches, tables, planters, bollards, and custom concrete products.







### **Stageline Mobile Stage Inc.**

Stageline's SL100 at Boston Calling/Alive Coverage.

<https://stageline.com/>

See ad p. 93





**Durable GreenBed**

P.O. Box 1311  
Philomath, OR 97370  
(541) 368-7935  
contact@durablegreenbed.com  
<https://durablegreenbed.com>



High-quality, raised garden beds built to last. Durable GreenBeds create abundant gardens and fantastic yields thanks to improved aeration, moisture control, drainability, and pest resistance. We manufacture our garden beds in the USA with a non-toxic, woodcrete-composite formula, which produces better results than wood, metal, or plastic alternatives.



**DuraGrid**

2330 California Ave.  
Salt Lake City, UT 841040  
(800) 457-0174  
lchristensen@snaplock.com  
[www.duragrid.com](http://www.duragrid.com)



DuraGrid interlocking tiles provide grip, safety, and durability for both indoor and outdoor applications. Ideal for patios, pool decks, locker rooms, shower mats, and more, DuraGrid installs in minutes with no tools required. Available in various colors, simultaneously improve the safety and aesthetics of your space with DuraGrid.



**Easi-Set Buildings**

5119 Catlett Road  
Midland, VA 22728  
(540) 439-8911  
info@easiset.com  
[www.precastbuildings.com](http://www.precastbuildings.com)



Easi-Set precast concrete buildings and restrooms provide durability, flexibility, convenience, cost-effectiveness, and long-lasting security. Our pre-engineered buildings install quickly and are available with a variety of styles complete with interior and exterior outfitting options such as: HVAC, lighting, plumbing, and electricity. They have everything necessary for your park facilities.





### PSS

LaneGard is a lightweight, foldable barricade that is ready when you are.  
[www.PSS-Innovations.com](http://www.PSS-Innovations.com)  
 See ad p. 79



### Head Edger Trimmer

For the manicured look you are looking for.  
[www.headedger.com](http://www.headedger.com)  
 See ad p. 55



### American Swing Products— High Back Infant Swing Seats

Engineered with safety in mind.  
<https://americanswing.com/>  
 See ad p. 27





**E & D Ventures LLC**  
**DBA Elite Laser Tag Equipment**  
 513 E South Street  
 Aberdeen, NC 28315  
 (910) 263-2265  
[elitelasertagsales@gmail.com](mailto:elitelasertagsales@gmail.com)  
<https://elasertag.com>



Experience the pinnacle of laser tag excellence with Elite—crafted for unmatched reliability and designed to ignite excitement. Unbox, play, and effortlessly maximize your profits with our premium gear. Benefit from expert support via our Operator Hotline and comprehensive repair services. Visit our online store and equip your fun today at [elitelasertagsales@gmail.com](mailto:elitelasertagsales@gmail.com)!



**EP Climbing**  
 63085 NE 18th St Ste. 101  
 Bend, OR 97701  
 (541) 388-5463  
[hello@epclimbing.com](mailto:hello@epclimbing.com)  
[www.epclimbing.com](http://www.epclimbing.com)



Outdoor Boulders are designed to elevate the park and recreation experience, making outdoor spaces more accessible, inclusive, and enjoyable for all. We believe in the power of bouldering to bring communities together, promote physical activity, and create unique opportunities for multigenerational engagement.

**EP Brings Climbing to Everyone**



**ERC Wiping Products**  
 800-225-9473  
[info@ercwipe.com](mailto:info@ercwipe.com)  
[www.ercwipe.com](http://www.ercwipe.com)



ERC Wiping Products, A CCP Direct Company, is a wholesale supplier of cotton athletic towels, gym wipes, wiping rags, microfiber towels, disposable gloves, air care, and more. We have been supplying wiping products to thousands of businesses for over 100 years. If you wipe with it, we stock it.





### **Phelps Honey Wagon**

Phelps Honey Wagon is an industrial waste and water management system suitable for various applications.

**[www.phelpshoneywagon.com](http://www.phelpshoneywagon.com)**

See ad p. 77



### **SEPCO - Solar Electric Power Company**

Enhance parks with eco-friendly, cost-saving solar lighting; beautiful, durable and maintenance-free for vibrant public spaces.

**<https://www.sepco-solarlighting.com/>**

See ad p. 87





**Experiential Systems, Inc.**

P.O. Box 188  
Lansing, IL 60438  
(877) 206-8967  
info@experientialsystems.com  
www.experientialsystems.com

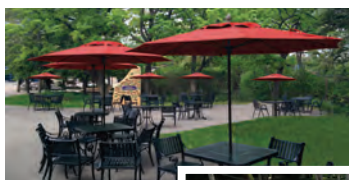


ESI is the first and only North American ISO-9001-certified company providing challenge course and climbing wall design, installation, inspection, staff training and equipment sales.



**FiberBuilt Umbrellas & Cushions**

2201 W. Atlantic Blvd.  
Pompano Beach, FL 33069  
(954) 484-9139  
dawn@fiberbuilumbrellas.com  
fiberbuilumbrellas.com



FiberBuilt's umbrellas include fiberglass ribs that flex in the wind and marine-grade canopies. The Lucaya model has a 1-piece, 1 1/2"-diameter pole and heavy duty hub, comes in 5 sizes and 6 finish colors. Markets with cranks can be used in-table. Cantilevers provide shade to multiple tables.



**FlexGround**

2140 E. Cedar St.  
Tempe, AZ 85281  
(602) 954-0000  
info@flexground.com  
www.flexground.com



At FlexGround, we specialize in innovative safety surfacing solutions for recreation spaces. We offer poured-in-place rubber, aquatic surfaces, sports courts, synthetic turf, trails, and maintenance products—all designed to deliver maximum durability, safety, and beauty for every project we take on.





### **BLICK Art Materials**

Find hundreds of original lesson plans, all free at [DickBlick.com](https://dickblick.com).

**DickBlick.com**

See ad p. 35



### **UltraSite**

The Jackson family of products includes the table shown here, as well as a matching receptacle, planter, and benches.

**[www.ultra-site.com](https://www.ultra-site.com)**

See ad p. 95



## Land Pride

Labor-saving, tractor-mounted, grounds maintenance implements to tackle your chores and to fit your lifestyle.

**[www.landpride.com](http://www.landpride.com)**

See ad p. 61



## SMARTfit, Inc.

SMARTfit Brain Health programming revolutionizes fitness by combining physical exercise with cognitive challenges, fostering both muscular and neurological growth for all ages and abilities.

**<https://smartfitinc.com>**

See ad p. 87



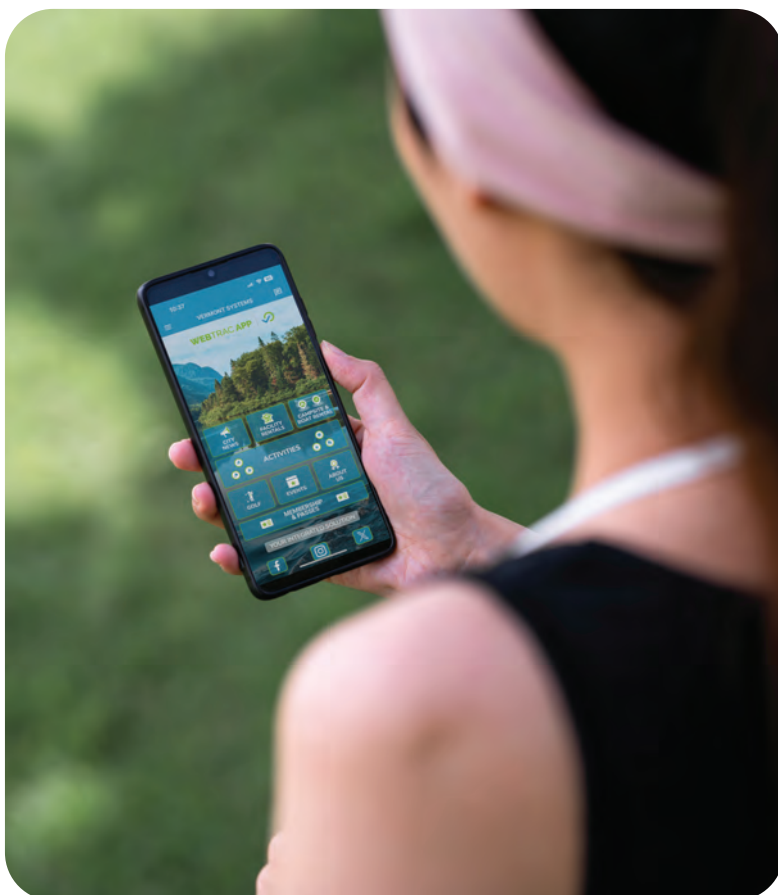


### **American Ramp Company**

Pump Tracks—A top-requested park amenity.

<https://americanrampcompany.com>

See ad p. 27



### **Vermont Systems**

Get complete recreation management and integrated payment processing on the go with Vermont Systems' all-in-one parks & recreation platform, featuring RecTrac, PayTrac, and the WebTrac App.

[www.vermontsystems.com](http://www.vermontsystems.com)

See ad p. 95





### Green Flush Restrooms

1420 N. Columbia Ridge Way  
Washougal, WA 98671  
(360) 718-7595

kyle@greenflushrestrooms.com  
<https://greenflushrestrooms.com>



Green Flush restrooms can go anywhere and provide users with the comforts of home. Every restroom has normal flush toilets and sinks. The restrooms can operate with or without connections to sewer, water, or power, making installations simple and sometimes saving hundreds of thousands of dollars.



### Gyms for Dogs - Natural Dog Park Products

3815 River Crossing Pkwy 100  
Indianapolis IN 46240  
(800) 931-1562  
sales@GymsForDogs.com  
[www.GymsForDogs.com](http://www.GymsForDogs.com)



## DOG PLAY & AGILITY EQUIPMENT



Water Fountains



Play Equipment



Fun Products



Themed Products



Pet Stations



Agility Products



### H2O Innovations

2793 110th St.  
Barnesville, MN 56514  
(877) 377-7837  
dougduan@yahoo.com  
<http://h2oinnovations.com>



The SS 200 Swim Station is made with vented PVC to prevent floating, fluted PVC handrails for better grip, non-skid plastic surface, aluminum frame for added durability and reversible platform allowing different heights for various age groups.







### **Public Restroom Company: Make Your Restrooms FUN**

A colorful wall mural can inspire creativity and help deter graffiti.

**[www.publicrestroomcompany.com](http://www.publicrestroomcompany.com)**

See ad p. 79



### **Aqua-Cycle Water Trikes**

Durable and long-lasting! 5 bright colors that sell themselves.

**[www.AquaCycles.com](http://www.AquaCycles.com)**

See ad p. 29





**Hammer-Head**  
1250 Wallace Dr., Suite D  
Delray Beach, FL 33444  
(866) 887-7983  
info@hammerheadvac.com  
www.hammerheadvac.com



Resort-21 and Resort-30 pool vacuums by Hammer-Head are ideal for quick and easy cleaning. Remove pool debris with our rechargeable 12-volt system. Sand, leaves, rocks, and coins are captured in the high-capacity debris bag. Wholesale only.



**Harris Miniature Golf Courses, Inc.**  
631 N. Keyser Ave.  
Scranton, PA 18504  
(570) 618-8818  
info@harrisminigolf.com  
www.harrisminigolf.com



Harris Miniature Golf Courses is the leader in miniature golf design and construction. With over 60 years of experience, we build miniature golf courses that are designed to provide exciting play for customers and high profits for business owners.



**Head Edger**  
139 Royal Oak Drive  
Guyton, GA 31312  
(912) 964-8395  
www.headedger.com



The revolution in sprinkler-head grounds maintenance—precision-balanced, easy to install/adjust, patented boot and bearing system, saves time and money, limited lifetime warranty, made in the USA.







### FiberBuilt Umbrellas & Cushions

Full line of shade products includes umbrellas, cabanas, and pavilions.

<https://fiberbuiltumbrellas.com>

See ad p. 49

### fds 9200 Turf Dethatcher



Tow-Behind Quad or 3-Point Hitch

### Wood Bay Turf Technologies

Wood Bay's FDS 9200 Thatch Remover does it all. . . plus aeration, overseeding, synthetic turf, and dirt infields.

[www.woodbayturftech.com](http://www.woodbayturftech.com)

See ad p. 99



### Murdock Manufacturing

Paired with Murdock Coolers, SpringH2O® Bottle Fillers deliver endless refreshing water—bottled or bottle-free!

[www.murdockmfg.com](http://www.murdockmfg.com)

See ad p. 67





**Hydrel**  
One Lithonia Way  
Conyers, GA 30012  
(888) 834-5684  
marketing@hydrel.com  
Hydrel.com



Hydrel® is a premier brand of outdoor architectural, aquatics and landscape lighting products which incorporate innovative sealing capabilities, superior materials, and long-lasting finishes. Its luminaires can withstand decades of use with minimal maintenance and unmatched structural integrity. Committed to lighting performance for over six decades, Hydrel utilizes the most advanced sources and optics to create a wide variety of lighting effects. Combining today's smaller, more efficient sources with precision optical platforms, Hydrel achieves photometric performance seldom experienced in outdoor lighting—a soft, uniform illumination that is noticeably superior.



**Ice-America**  
807 Sprucelake Drive  
Harbor City, CA 90710  
(323) 776-9423  
sales@ice-america.com  
https://ice-america.com/



The premier provider of portable ice and roller rink equipment and services, including many exclusive high-performance products.

We offer portable rink event services ranging from basic equipment rental and purchase to turnkey event solutions.



**Kay Park Recreation Corp.**  
1301 Pine St.  
Janesville, IA 50647  
(866) 442-8161  
sales@kaypark.com  
www.kaypark.com



America's finest park equipment since 1954; includes outdoor benches, tables, grills, bleachers, trash containers, planters, bike racks, and more.







### **Precision® V10 Cordless, Hose-less Pool & Spa Cleaner**

Cordless, hose-less, compact, and rechargeable battery-operated professional cleaning. 2-hour run time. Floor cleaning and adapter for shallow water.

<https://watertechcorp.com>

See ad p. 97





### **Aquatix® by Landscape Structures**

Illuminate your splash pad with Accent Lights!

**[aquatix.playlsi.com](http://aquatix.playlsi.com)**

See ad p. 29



### **RockCraft Design**

Our concrete boulders offer fun for children and fitness for all.

**[www.rockcraft.net](http://www.rockcraft.net)**

See ad p. 85



### **Stern-Williams**

Keep your furry friends happy and hydrated with Stern-Williams' Pet Fountains. <https://sternwilliams.com/product/pet-fountain-2/>  
See ad p. 93



### **Broyhill Equipment LLC**

Broyhill's Load and Pack.  
[www.broyhill.com](http://www.broyhill.com)  
See ad p. 37





### Keystone Purchasing Network

90 Lawton Lane  
Milton, PA 17847  
(888) 490-3182  
info@theKPN.org  
www.theKPN.org



Purchasing Musco Lighting through the Keystone Purchasing Network, a national cooperative purchasing program, is a game-changer. A publicly bid and awarded contract can you make your parks, fields, and parking lots shine. Call or visit our website today to start your bid for a protected, complete turnkey lighting project.



**Lamotte Company**  
802 Washington Ave.  
Chestertown, MD 21620  
(800) 344-3100  
info@lamotte.com  
www.lamotte.com



LaMotte Company manufactures water-analysis equipment such as pool/spa test kits, electronic meters, test strips, TesTabs tablets, liquid reagents and software.

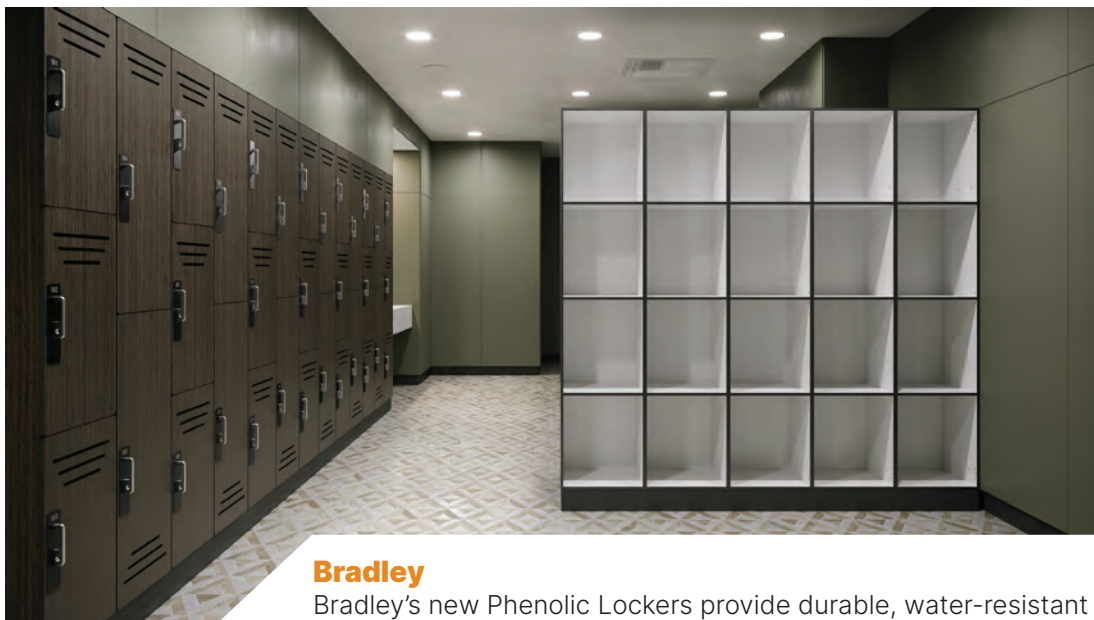


**Land Pride**  
P.O. Box 5060  
Salina, KS 67401  
(785) 823-3276  
lp\_info@landpride.com  
www.landpride.com



Labor-saving, tractor-mounted, grounds maintenance implements to tackle your chores and to fit your lifestyle.





### **Bradley**

Bradley's new Phenolic Lockers provide durable, water-resistant storage solutions with an array of customization options.

<https://www.bradleycorp.com/phenoliclockers>

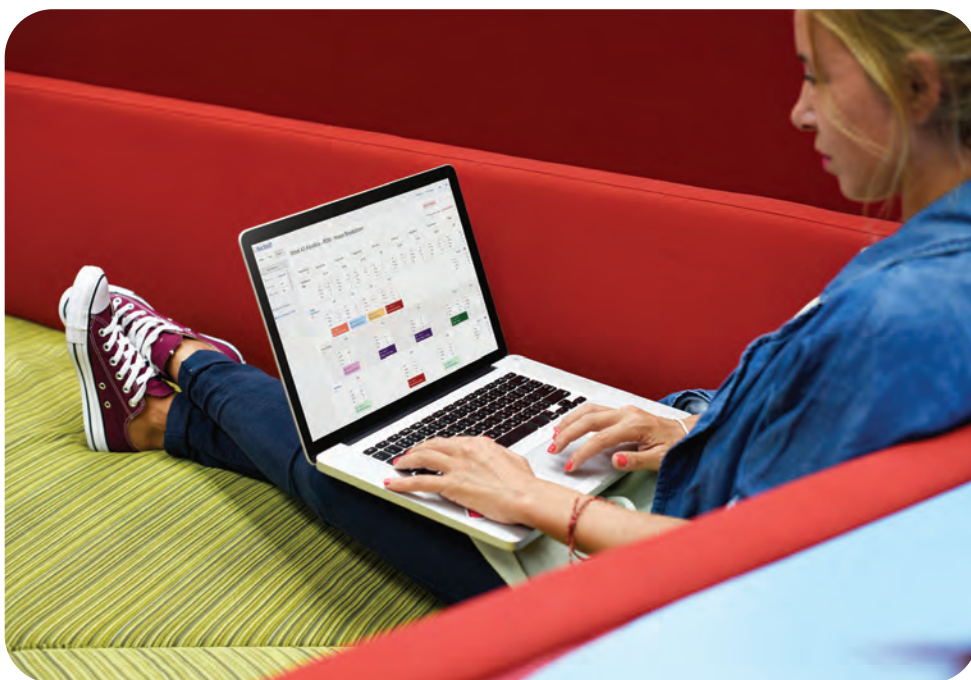
See ad p. 37

### **RecStaff**

You're a rec professional.  
So, why not use a staff  
scheduler made for  
your profession?

[www.recstaff.com](http://www.recstaff.com)

See ad p. 83







### Landmark Studio & Design

W184 S8425 Challenger Drive  
Muskego, WI 53150  
(888) 839-3853  
Sales@LandmarkStudio.com  
<https://landmarkstudio.com/>



Landmark makes it easy to give our park furnishings the green light. All our products, from entrance and directional signage to benches and waste solutions, are made from a minimum 71% recycled plastic, making them highly durable and incredibly sustainable. Custom-build yours with our various size, design, and color options.



### Landscape Structures Inc.

601 7th Street South  
Delano, MN 55328  
(888) 438-6574  
info@playlsi.com  
[www.playlsi.com](http://www.playlsi.com)



Landscape Structures is the leader in commercial playground equipment design and manufacturing. Since 1971, we have transformed the landscape of play by bringing captivating play spaces to communities and schools across the globe. Everyone at our employee-owned company welcomes the responsibility of creating experiences that honor and include every child's unique abilities. We believe play is life-changing. Because play, when designed for everyone, brings out the best in all of us.



### Lesstor Storage Racks

3700 Galt Ocean Drive  
Ft. Lauderdale, FL 33308  
(954) 658-7600  
hello@lesstorstorageracks.com  
[LesstorStorageRacks.com](http://LesstorStorageRacks.com)



**OUR PRODUCTS ARE THE NEWEST  
REVENUE PRODUCER FOR PROPERTIES**



### HEAVY DUTY COMMERCIAL WATER SPORTS RACKS Kayaks / SUPs / Canoes / Mixed Use

*We are the largest supplier of water-sports storage racks for state, county, city, parks, military bases, RV parks, condominiums, and marinas in the USA.*

- Community Involvement • Storage Club Memberships • Explosive Revenue Growth
- Lifetime Warranty • Maintenance-Free • Rolling Arms • Freestanding
- No Permits Required • Elderly and Handicap-Friendly • ADA-Compliant



### Experiential Systems

Pictured: Adventure Playground.

[www.experientialsystems.com](http://www.experientialsystems.com)

See ad p. 49



### DOGIPOT Pet Station

Sets the standard for heavy-duty, commercial durability in high-traffic, dog-friendly areas.

<https://dogipot.com>

See ad p. 43



### Royce Rolls Ringer Company

Stainless Steel, 1-4-Roll Toilet Paper Dispensers. American-made, durable, and vandal-resistant.

[www.roycerolls.net](http://www.roycerolls.net)

See ad p. 85





**Lo-Chlor**  
5841 Powerline Road, Suite 202  
Fort Lauderdale, FL 33309  
(800) 491-9810  
contact@lo-chlor.com  
lo-chlor.com



## Easily Reduce Chlorine Demand

Lo-Chlor® enzyme and algae-fighting chemicals superbly maintain water so chlorine can do its real job—disinfect. Our products reduce dependence on chlorine and shorten pool maintenance time, while delivering gorgeous, clean pool water.



See why Lo-Chlor is The PROVEN Solution® for pool operators.



**Madrax/Thomas Steele**  
1080 Uniek Dr.  
Waunakee, WI 53597  
(608) 849-1080  
cpivotto@madrax.com  
www.madrax.com



Madrax Bike Racks and Thomas Steele Site Furnishings by Graber Manufacturing, Inc. provide high-quality bicycle parking like the shadow rack and stylish site furnishings like the Ashton series. With a commitment to exceptional craftsmanship and customer service, we offer durable, versatile site amenities for creating attractive and cohesive outdoor spaces.



**Milnor Laundry Systems**  
P.O. Box 400  
Kenner, LA 70063  
(504) 467-9591  
milnorinfo@milnor.com  
www.milnor.com



For over 75 years, Milnor Laundry Systems has been a leading commercial and industrial laundry machinery manufacturer. Milnor's washer-extractors range from 25-700 lb. capacity and dryers range from 30-750 lb. capacity. These models are available in a variety of options, depending on your needs.







### **Burke Playgrounds Giant Burke® Chair**

Jump on the NEW Giant Burke® Chair to take a photo and laugh with friends and family.

<https://www.bciburke.com/products/product/custom-giant-burke-chair>

See ad p. 37



### **Premier Polysteel Picnic Tables**

Durable and attractive picnic tables withstand extreme weather and constant use. Maintenance-free, 20-year warranty.

<https://premierpolysteel.com>

See ad p. 77





### Modular Pumptrack USA

915 Highland Pointe Drive  
#250 Roseville, CA 95678  
(916) 542-2744



brian@modularpumptrackusa.com  
www.modularpumptrackusa.com



**Modular Pumptrack USA**  
delivers ready-to-ride modular  
pump tracks for all age groups.



Our low-maintenance,  
quick-install tracks & skill features create instant bike park experiences,  
perfect for parks, schools, resorts, and events. Choose from  
a variety of layouts to fit your space, budget, and community needs.



www.monarchcoin.com 1-800-462-9460  
Family Owned & Operated Since 1903

### Monarch Coin & Security Inc.

1512 Russell St., Bldg. A  
Covington, KY 41011  
(800) 462-9460  
sales@monarchcoin.com  
www.monarchcoin.com



Monarch Coin and Security has  
been family-owned-and-operated  
since 1903. We manufacture a  
coin/token-operated meter for  
public showers as well as lighting  
at outdoor activity courts. We can  
also provide a locking key ring to  
secure your facility's keys.



### Murdock Manufacturing

15125 Proctor Ave.  
Industry, CA 91746  
(626) 937-2503  
sales@murdockmfg.com  
www.murdockmfg.com



Murdock Manufacturing is a leading designer, manufacturer and  
supplier of stainless-steel indoor and outdoor hand-washing stations,  
drinking fountains, hydrants, bottle fillers, and more. A trusted name  
in water-delivery systems since 1853.



### National Recreation Systems (NRS)

Custom 115' mitered bleachers with 285 powder-coated, blue seats, ADA spaces, and sleek vertical picket guardrails.

[www.bleachers.net](http://www.bleachers.net)

See ad p. 71



### Zebec, Inc.

Zebec offers the most complete selection of waterpark rafts available.

[www.zebec.com](http://www.zebec.com)

See ad p. 101





**STEC Equipment, Inc.**

The GKB Combitool—A multi-tool  
for field maintenance.

<https://stecequipment.com/>

See ad p. 93







### **PumpTrax USA—Bike Parks, Pump Tracks, & Skateparks**

We can design and build your bicycle playground for all ages and skill levels.

<https://www.pumptraxusa.com/>

See ad p. 79



### **Sprint Aquatics**

Sprint Aquatics Kickboards—a multipurpose swimming tool.

[www.sprintaquatics.com](http://www.sprintaquatics.com)

See ad p. 91





**Natare Pools**  
5905 West 74th St.  
Indianapolis, IN 46278  
(800) 336-8828  
natare@natare.com  
<https://natare.com>



Natare Pools is a leading provider of commercial pool systems, including stainless-steel pools, gutters, filtration, moveable bulkheads, and Natatec® PVC pool lining. Whether renovating an aging facility or building from the ground up, our customized and cost-effective solutions will help you deliver high-performance aquatics that last for decades.



**National Recreation Systems (NRS)**  
5120 Investment Drive  
Fort Wayne, IN 46808  
(888) 568-9064  
sales@bleachers.net  
[www.bleachers.net](http://www.bleachers.net)

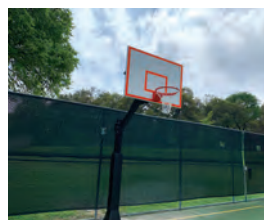


### We Are The Bleacher Experts!

National Recreation Systems has been the leading manufacturer of spectator-seating solutions for over 25 years. From custom designs to quick-ship products to total renovations, you can count on our expert team to guide you through every stage of your project. Contact us today to learn more!



**National Sports Products**  
3441 S. 11th Ave.  
Eldridge, IA 52748  
(800) 478-6497  
sales@nationalsportsproducts.com  
[www.nationalsportsproducts.com](http://www.nationalsportsproducts.com)



Family-owned-and-operated for over 55 years, National Sports Products equips arenas, fields, and various sports facilities with top-of-the-line products for baseball, tennis, pickleball, basketball, volleyball, and soccer. We supply a wide range of products, including batting tunnels, basketball systems, tennis and pickleball nets, volleyball systems, windscreens, padding, and custom netting.





### Ice-America Portable Skating Rinks

The most trusted provider of portable ice and roller-skating rinks in North America.

<https://www.ice-america.com>

See ad p. 57



### Easi-Set Worldwide

Easi-Set precast concrete dugouts offer a quick, cost-effective upgrade for your ballfield.

<https://easet.com/>

See ad p. 45



# NITTERHOUSE

MASONRY PRODUCTS, LLC

## Nitterhouse Masonry Products, LLC

859 Cleveland Ave.  
Chambersburg, PA 17201  
(717) 267-4500  
masonry@nitterhouse.com  
www.nitterhousemasonry.com



Concrete log parking blocks designed to look like real logs but with the strength and durability of reinforced concrete. Produced by 100-year-old, family-owned-and-operated company.



## NORDOT® Adhesives

P.O. Box 241  
Scotch Plains, NJ 07076  
(908) 233-6803  
glue@nordot.com  
www.nordot.com



**NORDOT® Adhesives—the leading choice for sports, recreational, and aquatic surfaces.**

- ✓ One-part, solvent-based: Easy use, no mixing
- ✓ High “green strength”: Secure grab, strong bonding
- ✓ Ideal for all weather: No temperature restrictions
- ✓ Exceptional resistance: Withstands fresh and saltwater

Choose NORDOT® Adhesives for unmatched quality and durability year-round.



## Outdoor Shower Co., LLC

274 Cadillac Parkway, Suite 100  
Dallas, GA 30157  
(866) 746-9371  
info@outdoorshowerco.com  
www.outdoorshowerco.com



Our customers are guaranteed to experience the highest level of quality and low maintenance with Outdoor Shower Company's stainless-steel outdoor showers. With 25 years in business, we have stayed committed to designing products that last through even harsh weather conditions domestically and beyond.





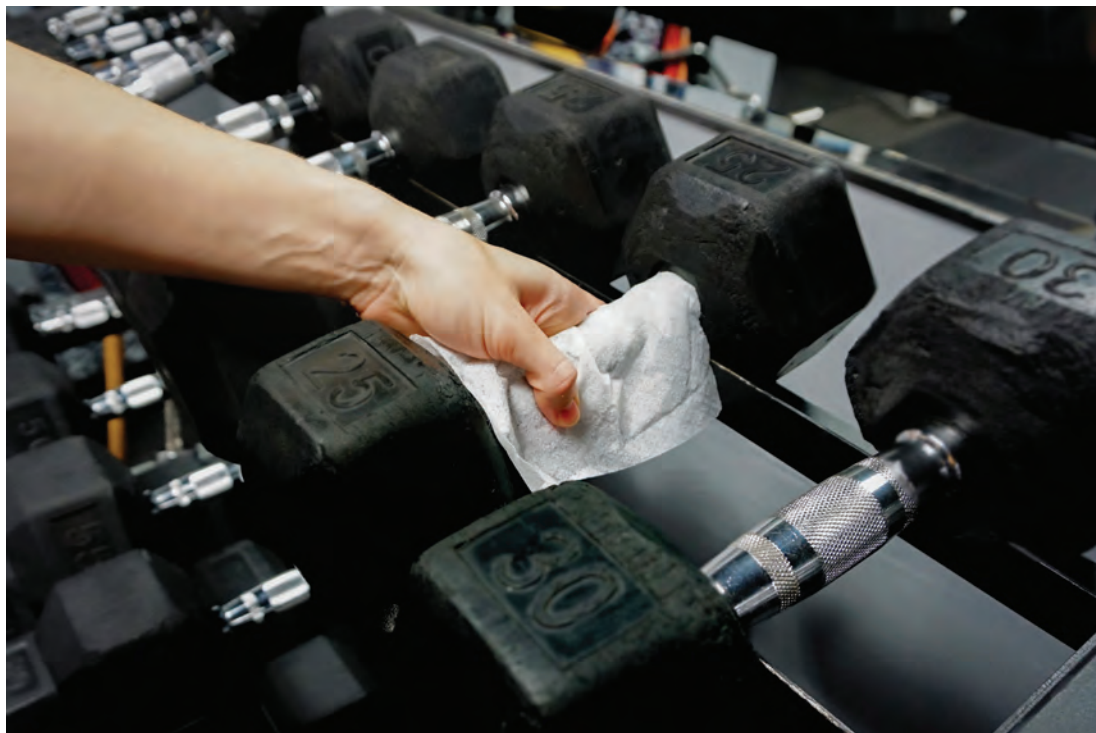


### **WMS Aquatics**

From above-deck to below-deck, we've got you covered in all your aquatic industry needs!

**[www.wmsaquatics.com](http://www.wmsaquatics.com)**

See ad p. 99



### **ERC Wiping Products Performance Wipes**

The smart way to clean and disinfect gym equipment.

**[www.ercwipe.com/gym-wipes/](http://www.ercwipe.com/gym-wipes/)**

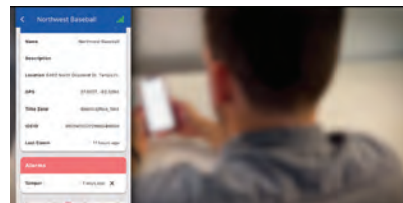
See ad p. 47





### Outdoorlink

3058 Leeman Ferry Road  
Huntsville, AL 35801  
dave@outdoorlinkinc.com  
<https://outdoorlink.com/parks-recreation/>

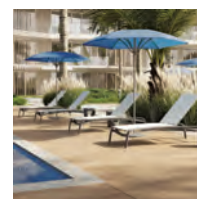


Outdoorlink's Smart Controllers provide Parks and Recreation teams with remote control over lighting, water features, outlets, door locks, gates, and more via a cellular-based IoT platform. Real-time alerts reduce site visits, cut costs, and ensure well-maintained parks. Over 1,200 organizations trust Outdoorlink to streamline asset management.



### ParknPool

30 Crossing Lane, Suite 105  
Lexington, VA 24450  
(877) 777-3700  
info@parknpool.com  
[www.parknpool.com](http://www.parknpool.com)



The leading online distributor of commercial-grade outdoor furniture and site amenities such as pool furniture, park benches, picnic tables, trash receptacles, bleachers, playground equipment and more.



### Percussion Play

501 Dunsbury Park, Brooklime Way  
Havant, Hampshire PO9 4FF  
United Kingdom  
(866) 882-9170  
info@percussionplay.com  
[www.percussionplay.com](http://www.percussionplay.com)



Designing high-quality outdoor musical instruments, we help transform parks, playgrounds, and camps into interactive soundscapes.

Built for all ages and abilities, our durable, weatherproof instruments promote inclusive play, creativity, and community engagement—enhancing outdoor spaces with meaningful, musical experiences.





### **Bison Inc.**

Bison's lifetime-warranty, Ultimate outdoor basketball systems offer 6" poles, unique backboards, and double-ring and breakaway goal options.

<https://bisoninc.com/collections/ultimate-playground-systems>

See ad p. 35







### Phelps Honey Wagon, Inc.

158 Whiskey Springs Road  
Dillsburg, PA 17019  
(717) 502-1090  
info@phelpshoneywagon.com  
www.phelpshoneywagon.com



Phelps Honey Wagon provides a less-expensive option for waste and water handling than in-ground sewers. Our wagon is an industrial machine for the small campground, small in size but powerful in working capabilities.



The honey wagon can be used for many purposes: pumping RV holding tanks as well as pits, portable toilets, holding tanks and any other water-handling needs you might have. The options are many! The industrial diaphragm pump moves 50-60 gallons per minute so you get the job done fast!

**Making onsite sewage handling "So Sweet"**



### PlayMax Surfacing, Inc.

1950 Compton Ave., #111  
Corona, CA 92881  
(951) 371-6504  
cwolf@playmaxsurfacing.com  
www.playmaxsurfacing.com



PlayMax is America's first choice for playground surfacing. Safe and fun, PlayMax has it all—MaxPour, PolyMax, and SplashMax systems, SoundMax audio towers and tiles, and our innovative PlayTurf. PlayMax has a surface for every playground!



### Premier Polysteel

P.O. Box 77  
Northwood, IA 50459  
(877) 746-3826  
sales@premierpolysteel.com  
www.premierpolysteel.com



Premier Polysteel manufactures 100-percent plastic-coated steel picnic tables, benches, receptacles, bike racks, planters and tree grates. All products are built to last and backed by an industry-leading 15-year warranty.





## Elite Laser Tag Equipment

Reliable, high-tech laser tag equipment for mobile businesses and fixed facilities.

<https://elasertag.com>

See ad p. 47



## Doty & Sons Concrete Products, Inc.

Great selection of outdoor game products, including concrete cornhole boards, Ping-Pong tables (four styles available), Ladder Toss, Foosball tables, Disc-Connect (Connect 4) game, and game tables.

[www.outdoorconcretetegames.com](http://www.outdoorconcretetegames.com)

See ad p. 43



## Lo-Chlor®

The Proven Solution® for irresistible and easy pool water.

[lo-chlor.com](http://lo-chlor.com)

See ad p. 65





**PSS**  
 2444 Baldwin Road  
 Cleveland, OH 44104  
 (800) 662-6338  
 Team@pss-innovations.com  
 www.PSS-Innovations.com



LaneGard is the ideal traffic and crowd control solution for parks and recreation professionals. Its one-piece, foldable design sets up in seconds and stores easily. Once assembled, always assembled, LaneGard creates safe, highly visible barriers for events, maintenance, or restricted areas and is ready when you are.



**Public Restroom Company**  
 2587 Business Parkway  
 Minden, NV 89423  
 (888) 888-2060  
 info@publicrestroomcompany.com  
 www.publicrestroomcompany.com



At Public Restroom Company, we can add on space to any restroom design. With our modular construction design approach, we can customize and build something multi-functional to fit your park's specific needs. We strive to build safer, easy to maintain, vandal-resistant buildings that are designed to last and look good, too.



**PumpTrax USA**  
 17820 Woodbury Ave.  
 Cleveland, OH 44135  
 (614) 302-3725  
 jason@pumptraxusa.com  
 pumptraxusa.com



PumpTrax USA designs and constructs affordable, safe, and enjoyable bicycle playgrounds, paved pump tracks, mountain bike trails, Strider tot tracks, flow trails, bicycle skills parks, BMX race tracks, and dirt jumps. We offer a full design and build package, a turnkey solution for your recreation needs.







### **SpectraTurf**

Gates Canyon in Calabasas, Calif., features 15,000 square feet of SpectraTurf's flagship poured-in-place SpectraPour system.

<https://www.spectraturf.com>

See ad p. 91

### **Gyms For Dogs**

Hill Climb in Water Blue—a great exercise to help build muscle in a dog's legs and torso.

[www.GymsForDogs.com](http://www.GymsForDogs.com)

See ad p. 53







### **Bears Playground**

We offer one-of-a-kind, bold, strong, built-to-last, natural playground structures for public use as well as independent events and outdoor classroom hardscape.

**[www.BearsPlaygrounds.com](http://www.BearsPlaygrounds.com)**

See ad p. 31





### SnapSports

SnapSports' patented PickleGrip court, the ideal surface for recreational play!

[www.snapsports.com](http://www.snapsports.com)

See ad p. 91

## SINGLE MODULAR STATION



### Dog Wash Systems USA

A wide variety of self-serve pet wash styles are available to serve your recreation project. Let Dog Wash Systems, USA partner with you to help you do what you do best—serve your community!

[www.dogwashsystems.com](http://www.dogwashsystems.com)

See ad p. 41



**Pilot Rock**

RJ Thomas Mfg. Co.  
Cherokee, Iowa

**R.J. Thomas MFG. Co./Pilot Rock**

P.O. Box 946  
Cherokee, IA 51012  
(800) 762-5002

customerservice@rjthomas.com  
www.pilotrock.com



Manufactured by R.J. Thomas Mfg. Co. in Cherokee, Iowa, the Pilot Rock brand of outdoor site equipment includes benches, picnic tables, trash and recycling receptacles, bike racks, bear-proof receptacles and food lockers, lantern holders, planters, campfire rings, charcoal grills and much more! Proudly made in the USA since 1959.



**RecStaff**  
staff scheduling for parks and recreation

Whether you run a single rec center or an entire city rec department, our cloud-based staff scheduling solution will work for you!

887 732-7823

sales@recstaff.com

www.recstaff.com



**Robertson**  
Recreational Surfaces

**Robertson Recreational Surfaces**

2140 E. Cedar St.  
Tempe, AZ 85281  
(800) 858-0519  
info@totturf.com

www.robertsonsurfaces.com



We are the only official installers of TotTurf®—America's Favorite Playground Surface! Robertson now installs nationwide to provide compliant, resilient, safer surfacing for all in communities across the USA!







### Keystone Purchasing Network

Restroom installation is quick and easy through Keystone Purchasing Network.

<https://www.thekpn.org>

See ad p. 61

### Belson Outdoors, Inc.

Enhance guest experiences during indoor or outdoor events with aluminum bleacher stands.

[www.belson.com](http://www.belson.com)

See ad p. 31



### Lesstor Storage Racks

Heavy-duty commercial kayak, SUPs, and canoe storage racks.

[LesstorStorageRacks.com](http://LesstorStorageRacks.com)

See ad p. 63





**RockCraft**  
2350 Beta Ave.  
Burnaby, BC V5C 5M8  
(866) 786-1635  
[www.rockcraft.net](http://www.rockcraft.net)



RockCraft Boulders are the most natural-looking playground boulders on the market, having the most realistic finish and colors available.

Our concrete boulders offer **Fun** for children and **Fitness** for all.



**Romtec, Inc.**  
18240 N. Bank Rd.  
Roseburg, OR 97470  
(541) 496-3541  
[risales@romtec.com](mailto:risales@romtec.com)  
<https://romtec.com>



Romtec designs, manufactures, supplies, and constructs buildings and structures for all types of applications.

Our process begins by designing a building for your site, then providing the complete plan set. Romtec manufactures and supplies the building to be constructed by the contractor or by Romtec as a "turnkey" project.



**Royce Rolls Ringer Company**  
16 Riverview Terrace NE  
Grand Rapids, MI 49505  
(800) 253-9638  
[info@roycerolls.net](mailto:info@roycerolls.net)  
[www.roycerolls.net](http://www.roycerolls.net)



Celebrating 100 years and four generations of family ownership, Royce Rolls Ringer Company is the premier manufacturer of durable, stainless-steel bathroom fixtures & janitorial equipment. Our American-made products, backed by a 10-year guarantee, include a wide range of vandal-resistant toilet paper dispensers, waste receptacles, mop bucket/wringer combos, housekeeping carts, utility carts, and other essential restroom fixtures designed for lasting performance and attractive appearance.







### **Pilot Rock**

Complete your outdoor space with Pilot Rock® site products!  
<https://www.pilotrock.com>  
 See ad p. 83



### **National Sports Products**

Fulfilling your pickleball court construction needs with posts, nets, windscreens, and divider systems.  
[www.nationalsportsproducts.com](http://www.nationalsportsproducts.com)  
 See ad p. 71





**Salsbury Industries - Lockers.com**

18300 Central Ave.  
Carson, CA 90747  
(323) 846-6700  
customerservice@lockers.com  
<https://www.lockers.com>



Salsbury Industries is an industry leader in manufacturing and distributing quality metal, wood, and plastic lockers and locker benches. Salsbury's design engineers and sales professionals are available to guide clients through the process of designing a locker room and selecting the appropriate lockers for the desired application.



**SEPCO -  
Solar Electric Power Company**

1521 SE Palm Court  
Stuart, FL 34994  
(772) 220-6615  
info@sepconet.com  
<https://www.sepco-solarlighting.com>



Brighten Your Public Spaces with Solar Lighting: Illuminate pathways, pavilions, parking lots, playgrounds, and more using eco-friendly solar lighting systems. SEPCO has proudly manufactured commercial solar LED lighting and off-grid power systems in the USA since 1994. Enhance safety, reduce energy costs, and create a welcoming environment for visitors.



**SMARTfit Inc.**  
4820 McGrath Street, Suite 140  
Ventura, CA 93003  
(805) 383-0080  
info@smartfitinc.com  
<https://smartfitinc.com>



SMARTfit Brain Health programming delivers faster transference to real life performance for all ages, abilities, and stages of life.





### Landscape Structures

Fly high with Flexx Swing®, a multi-user, inclusive swing that allows kids to recline while swinging.

<https://www.playlsi.com/en/commercial-playground-equipment/playground-components/flexx-swing-wsingle-post-swing-frame-52-bury/>

See ad p. 63

### Romtec, Inc.

A gender-neutral restroom building structure with a breezeway design and a central handwashing station.

<https://romtec.com>

See ad p. 85





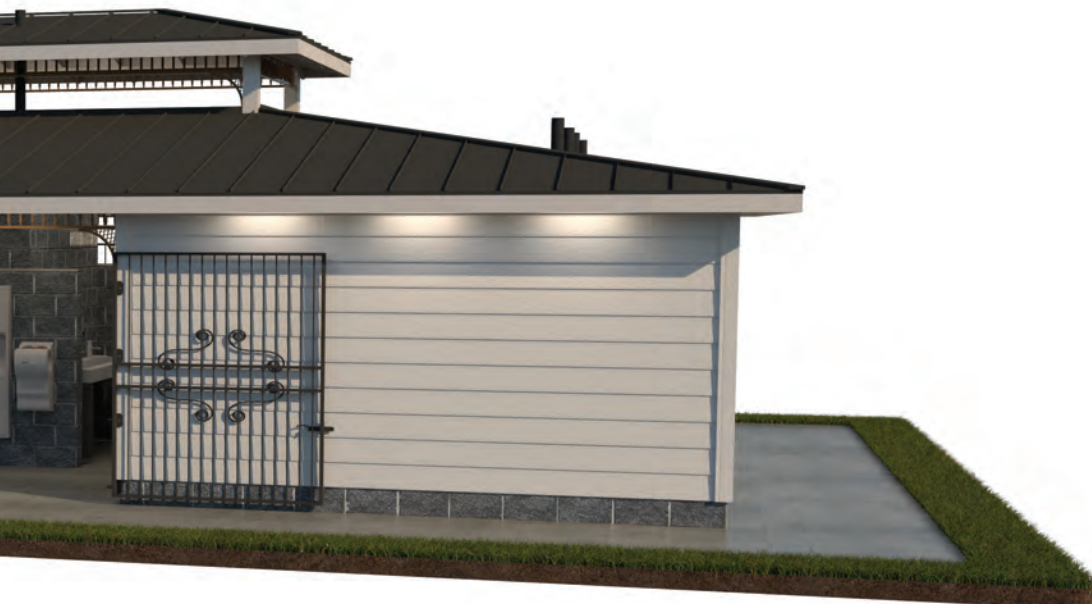


### **FlexGround**

PolySplash: Vibrant, softer, and durable surfacing for aquatic playgrounds nationwide.

**<https://www.flexground.com>**

See ad p. 49





### Green Flush Restrooms

Design services are available to create a striking, comfortable space tailored to your community.

<https://greenflushrestrooms.com>

See ad p. 53



### PlayMax Surfacing

"Back to School" starts with a new 8,200-s.f. MaxPour® system by PlayMax at Star View Elementary, Midway City, Calif.

<http://www.playmaxsurfacing.com>

See ad p. 77





**SnapSports**  
2330 California Ave.  
Salt Lake City, UT 841040  
(801) 746-0143  
lchristensen@snaplock.com  
www.snapsports.com



SnapSports Athletic Surfaces provide durable, safe, and completely customizable indoor and outdoor courts, ideal for basketball, futsal, pickleball, tennis, volleyball and more!

Instantly add value and increase your recreational offerings with a low-maintenance, high-performance multi-court. Available as DIY or with full installation, your new court installs in 24-48 hours ensuring minimal facility disruption and maximum ROI.



**SpectraTurf**  
555 South Promenade Ave., Suite 103  
Corona, CA 92879  
(800) 875-5788  
estimating@spectraturf.com  
www.spectraturf.com



SpectraTurf is an innovative leader in manufacturing and installing rubberized playground safety surfacing that can be enjoyed by people of all ages and abilities. We understand our role in the playground and recreation surfacing industry:

Advancing safe play and healthy recreation by delivering a beautiful, durable, safe, and versatile surface for playgrounds, splash pads, fitness trails, jogging or walking paths, or other indoor/outdoor areas. Our on-staff and experienced contractors ensure your poured rubber, rubber tile, synthetic turf, or rubber mulch surfacing is installed to your exact specifications and design.



**Sprint Aquatics**  
P.O. Box 387  
Oceano, CA 93475  
(800) 235-2156  
peyton@sprintaquatics.com  
www.sprintaquatics.com



Sprint Aquatics has been a premier aquatics supplier for decades, and we are proud to say that we have been in business since 1972! From water aerobics and physical therapy to competitive water sports and recreational activities, Sprint Aquatics offers all your aquatic product needs.





### Aqua Creek Products

Custom-branded pool access  
for people of all abilities

<https://aquacreekproducts.com>

See ad p. 29



### NORDOT® Airless Spray

Sprays evenly, covers large areas,  
and ensures strong, durable bonds.

[www.nordot.com](http://www.nordot.com)

See ad p. 73





**Stageline Mobile Stage Inc.**  
827 L'Ange-Gardien Blvd.  
L'Assomption, QC J5W 1T3 Canada  
(450) 589-1063  
info@stageline.com  
<https://stageline.com>



### STAGING MADE SIMPLE

Stageline mobile stages are the industry standard for both **safety** and **efficiency**. They boast **quick setup, easy operation,** and **long-lasting durability**, empowering your team to concentrate on crafting truly unforgettable events. Hundreds of municipal, government, and military procurement specialists consistently choose Stageline mobile stages. They recognize them as the **highest quality** and **safest** outdoor staging equipment available for their community events.



**STEC Equipment, Inc.**  
405 McGee Road  
Anderson, SC 29625  
(888) 325-2532  
sales@stecequipment.com  
[https://steceequipment.com](https://stecequipment.com)



Turf Field Maintenance is a **MUST!** Discover the solutions offered by STEC Equipment. Whether you are maintaining natural grass or synthetic playing surfaces, STEC Equipment has the perfect piece of equipment to keep your fields healthy and well-maintained, and increase their longevity!



**Stern-Williams**  
13920 Cypress Lane  
Grandview MO, 64030  
(800) 323-2359  
orders@sternwilliams.com  
<https://sternwilliams.com>



Stern-Williams manufactures durable outdoor drinking fountains in a variety of recreational areas for pets and active people like you. We specialize in building high-quality custom fountains with a combination of features including bottle fillers, outdoor showers, foot sprayers, pet fountains, and more.







### ClearSpan Structures

ClearSpan manufactures fabric and metal-building solutions.

[www.ClearSpan.com](http://www.ClearSpan.com)

See ad p. 41



### Landmark Studio & Design

Give Landmark's sustainable, custom-built park signage the green light.

<https://landmarkstudio.com>

See ad p. 63





**UltraSite**  
1675 Locust St.  
Red Bud, IL 62278  
(800) 458-5872  
info@ultra-site.com  
www.ultra-site.com



UltraSite's premium site furnishings and park amenities provide a wide variety of attractive, durable, and low-maintenance product solutions that enhance the recreation experience. From modern designs to traditional aesthetics, we offer 18 curated collections. Contact us today to learn more!



**Vac-Alert Industries, LLC**  
1260 N. Dutton Ave., Suite 240  
Santa Rosa, CA 95401  
(707) 576-8282  
info@vac-alert.com  
www.vac-alert.com



The Vac-Alert SVRS is the perfect safety solution for pools, spas, fountains and slides. The spring-loaded piston reacts instantaneously, opening to atmosphere and releasing the life-threatening suction of the drain. The Vac-Alert SVRS takes little or no maintenance with superior construction ensuring the product's long life.



## Streamline, Simplify, and Connect - All with RecTrac

Modern Parks & Recreation teams need more than just software; they need a complete platform. With RecTrac, you get powerful tools for scheduling, registration, and program management. Add in PayTrac for seamless payment processing and the WebTrac App for a fully branded mobile experience, and you're ready to serve your community anytime, anywhere.



From online sign-ups to real-time reporting, streamline your operations with Vermont Systems. Scan the QR Code to learn more.





### **Harris Miniature Golf Courses, Inc.**

Beautifully landscaped, miniature golf courses provide curb appeal and excitement for customers.

<https://www.harrisminigolf.com>

See ad p. 55



### **Industrial Laundry Equipment**

Sustainable and durable laundry equipment designed with savings in mind.

[www.milnor.com](http://www.milnor.com)

See ad p. 65





**Vision Fitness**  
1600 Landmark Drive  
Cottage Grove, WI 53527  
(919) 885-2978  
sales@visionfitness.com  
www.visionfitness.com



Vision Fitness brings unmatched value to your facility with trusted strength and cardio equipment that's intuitive, low-maintenance and built to last. Ideal for busy community fitness centers where performance, comfort and reliability matter most.



Connect with us to explore smart solutions for your space.



**Walker Manufacturing Company**  
5925 E. Harmony Road  
Fort Collins, CO, 80528  
(800) 279-8537  
info@walker.com  
walker.com



Since 1980, the Walker Mower has been the chosen mower for operators, providing beautiful results on finished turf. The Walker Mower is compact and agile, making it easy to get in and out of tight spaces on landscaped properties.



**Water Tech**  
10 Alvin Court, #111  
East Brunswick, NJ 08816  
(800) 298-8800  
CustomerCare@watertechcorp.com  
https://watertechcorp.com



A U.S.-based manufacturing company headquartered in East Brunswick, New Jersey, Water Tech has been revolutionizing the way pool owners and pool cleaning professionals maintain their pool for over 20 years.





### **Hydrel**

Hydrel is a premier brand of outdoor, aquatic, and landscape lighting luminaires.

**Hydrel.com**

See ad p. 57



### **Robertson Recreational Surfaces**

Unidad Park—Bring your playspace to life with themed, imaginative surfacing!

**<https://www.robertsonsurfaces.com>**

See ad p. 83



Architecture • Planning • Aquatics • Interiors

**Designing spaces where communities connect, play, and thrive.**

From aquatics and recreation to golf clubhouses and ice centers,  
we design places that bring people together.



**williams-architects.com**

One Pierce Place, Suite 550W  
Itasca, Illinois 60143  
630.221.1212

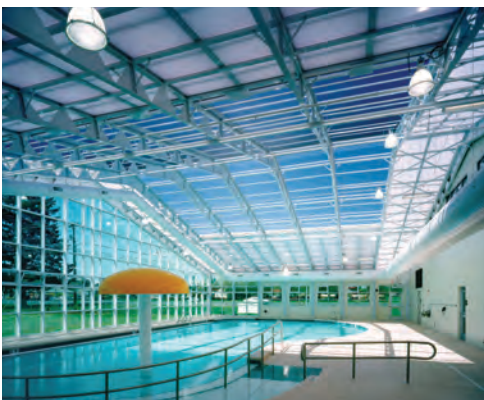


**WMS Aquatics**

P.O. Box 398  
Ellensburg, WA 98926  
(800) 426-9460  
sales@wmsaquatics.com  
www.wmsaquatics.com



**FIND THE PRODUCTS & EXPERTISE  
YOU NEED**



With 50 years of  
experience, our  
exceptional team  
offers top  
industry  
knowledge and  
superior service,  
creating long-lasting  
relationships  
with all our  
customers.



**Wood Bay Turf Technologies**

19609 North Welk Drive  
Sun City, AZ 85373  
(800) 661-4942  
info@woodbayturftech.com  
www.woodbayturftech.com



The fds9200 Turf Dethatcher is faster and more efficient in providing compaction relief to synthetic fields as well as pulling up wet and dry thatch. Wood Bay manufactures the dynBlades—save money and install tungsten carbide-tipped veri-cut and groomer blades for more efficient and healthier turf.



### Lamotte Company Mobile

WaterLink® SpinTouch® Code 3581

Innovative photometer allows  
10 pool and spa water tests to be  
measured in just 60 seconds.

[www.lamotte.com](http://www.lamotte.com)

See ad p. 61



WaterLink® SpinTouch®



### Kay Park Picnic Tables

Kay Park Heavy-Duty Picnic Tables come in a variety of weather-resistant, low-maintenance materials, in various shapes, sizes, and ADA configurations.

[www.kaypark.com](http://www.kaypark.com)

See ad p. 57





**Zebec, Inc.**  
P.O. Box 181570  
Fairfield, OH 45018  
(513) 829-5533  
zebec@zebec.com  
www.zebec.com



Manufacturer of commercial-grade watersports and play products: slide and float tubes, rafts and foam slide mats, racer mats, all types rope and netting, impact padding, lily pad walk floats and netting, inflatable barriers, life vests, sidwinder tubes and bumper boat tubes.



### **Dog-ON-It-Parks**

Free customization on all dog agility components!

**[www.dog-on-it-parks.com](http://www.dog-on-it-parks.com)**

See ad p. 43



# Bolster Boring Capabilities

By Joe Haynes

The advantages of horizontal boring attachments for mechanical earth drills

**For** parks and recreation departments, efficiency, precision, and safety are essential to successfully complete landscaping and grounds upgrades. However, tackling different drilling and horizontal boring jobs typically means investing in multiple specialized machines, and costs can add up quickly.





Luckily, solutions exist that allow crews to take on various projects with the same equipment package. Mechanical earth drills with innovative add-ons can tackle jobs such as installing landscape lighting and sprinkler systems as well as post-hole digging, without having to purchase multiple machines. Here's how horizontal boring kits help grounds crews do more with less.

### A Versatile Machine

Leading manufacturers offer mechanical earth drills that not only offer quick auger changeouts for multiple drilling jobs, but also are compatible with horizontal boring attachments. Customization options are important to maximize drilling versatility. Earth drills with various auger sizes, from 1.5-inch-diameter for soil sampling to 16-inch-diameter nursery augers, ensure that the drill is properly equipped for a specific task.

For maximum efficiency, look for a drill that allows for safe, simple, and efficient one-man operation. Some modern earth drills are lightweight but pack a punch with high-speed operation, reaching drilling speeds of up to 360 rpm for fast and clean drilling. Industry-leading drills feature a steel torque tube to protect users from dangerous kickback, allowing for safe one-man operation for fence installation, tree planting, and other landscaping projects.

### Kit Options

Parks and recreation departments should also consider the scope of the horizontal boring jobs that crews will need to complete. Look for a drill that can easily pair with different types of horizontal boring kits by replacing the auger with the package's attachments. For smaller projects, a package that allows quick boring up to 5 feet is useful for going underneath sidewalks, paths, or drainage ditches to easily install electrical, water, and plumbing lines.



## Ride A Tricycle On Water!

### MORE FUN FOR EVERYONE!

- Easy to Operate
- Built to Last
- Low Maintenance
- High Rental Profits



**Made Only In The USA**

**FOR MORE INFORMATION**

**info2025@aquacycles.com • 800-970-2688**  
**International +1.714.970.2688**

**www.aquacycles.com**





*When taking on bigger jobs, the optimal attachment package allows boring up to 50 feet under wider spaces such as driveways, roads, and parking lots for irrigation systems, electrical conduit, or communication cables.*

With a 3-inch-diameter auger and wiggle joint extension that are lightweight and easy to install, this option allows crews to bore underneath the concrete without damage, preserving surface integrity and eliminating the need for costly restoration and repair.

When taking on bigger jobs, the optimal attachment package allows boring up to 50 feet under wider spaces such as driveways, roads, and parking lots. This extended reach allows for more complex underground installations like irrigation systems, electrical conduit, or communication cables. An expandable design provides the flexibility to adjust the setup based on the desired bore length. Kits like this one often feature a water drill bit, swivel adapter, swivel assembly, and a horizontal drill key. To complete the setup, crews will also need a garden hose, a water pipe for the length of the bore plus 15 feet, and necessary couplings. The water from the hose runs through the water pipe to flush out the cuttings for a clean result. Like attachment packages for smaller jobs, these save time and money by keeping concrete and asphalt surfaces intact.



**Just for the fun of it!®**



**Safe and fun playground surfacing**



**(951) 250-6039 playmaxsurfacing.com**

## DOG AGILITY & PLAY PRODUCTS



**WATER FOUNTAINS**

**FUN PRODUCTS**

**AGILITY ITEMS**



**PET STATIONS**

**DOG WASH TUBS**

**PLAY EQUIPMENT**



**GYMS FOR DOGS™**  
Natural Dog Park Products

GymsForDogs.com  
sales@GymsForDogs.com  
800-931-1562

**PRB+**  
MAGAZINE

**So Many Ways  
To Keep Tabs on  
Parks & Recreation  
Best Practices**



- > Magazine
- > E-newsletter
- > Podcasts
- > Social Media
- > Website
- > And more!
- > Video

**Subscribe today and access the industry's  
best content however you want.**

**<https://www.PRBPlus.com>**

## COMMERCIAL OUTDOOR FURNITURE LEADING ONLINE DISTRIBUTOR



Site Amenities | Pool Furniture | Playgrounds | Bleachers | & More



**PARK n POOL**

sales@parknpool.com | 877.777.3700



## More Bang For Your Buck

So, for parks and recreation crews taking on a list of seasonal jobs, horizontal boring kits can turn a mechanical earth drill into a multifunctional workhorse. Instead of requiring multiple machines to tackle horizontal boring and drilling jobs, investing in one efficient equipment package is a cost-effective solution with rapid ROI. **PRB+**

*Joe Haynes is president at Little Beaver Inc.*

### About Little Beaver Inc.

Little Beaver has proudly manufactured quality, safe, and productive drilling equipment for three generations. With a full line of easy-to-operate equipment, along with a complete offering of accessories, including augers, extensions, points, and blades, Little Beaver effectively serves the needs of end-users from professional contractors to rental centers. For more information: Little Beaver, 2009 South Houston, Livingston, TX 77351; 800-227-7515; fax: 936-327-4025; [sales@littlebeaver.com](mailto:sales@littlebeaver.com); [www.littlebeaver.com](http://www.littlebeaver.com); Facebook; and LinkedIn.



For smaller projects, a horizontal boring attachment package that allows quick boring up to 5 feet under is useful for going underneath sidewalks, paths, or drainage ditches to easily install electrical, water, and plumbing lines.



# It's no ordinary fixture!

Take advantage of Hydrel's remarkable expertise in the complex demands of underwear lighting. Hydrel incorporates innovative sealing capabilities, superior materials, and long-lasting finishes.

Visit [Hydrel.com](http://Hydrel.com)



**Belson**  
 OUTDOORS

*Your Outdoor Superstore™*

[QuickShip Options](#) | [Bulk Inquiries Welcome](#)

[Search](#)

[Browse](#)

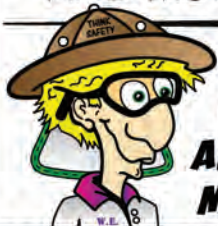
**CALL FOR FREE EXPERT HELP 1-800-323-5664**

**Shop Thousands of Products**

**belson.com**

## W.E. CHAPPS

MOWER TRASH BAGS,  
 STRING TRIMMER CHAPPS,  
 ZERO TURN MOWER COVERS,  
 CHEMICAL SPRAY VESTS,  
 HEDGE TRIMMER CHAPPS,  
 ARM GUARD CHAPPS,  
 STRING TRIMMER COVERS,  
 CHEMICAL SPRAY CHAPPS,  
 BACK PACK BLOWER COVERS  
 AND MUCH, MUCH MORE!!!



**100% AMERICAN  
 OWNED & OPERATED!  
 ALL W.E. PRODUCTS ARE  
 MADE IN THE U.S.A.**

FOR MORE INFORMATION PLEASE CALL

**800-816-2427**

VISIT US ONLINE:  
**WWW.WECHAPPS.COM**

SINCE  
 1989



## TREE SURROUNDS

Blends surrounds into hardscapes and landscapes



**WunderCovers™**  
 (775) 400-2883  
[www.WunderCovers.com](http://www.WunderCovers.com)

**MADE IN  
 USA**

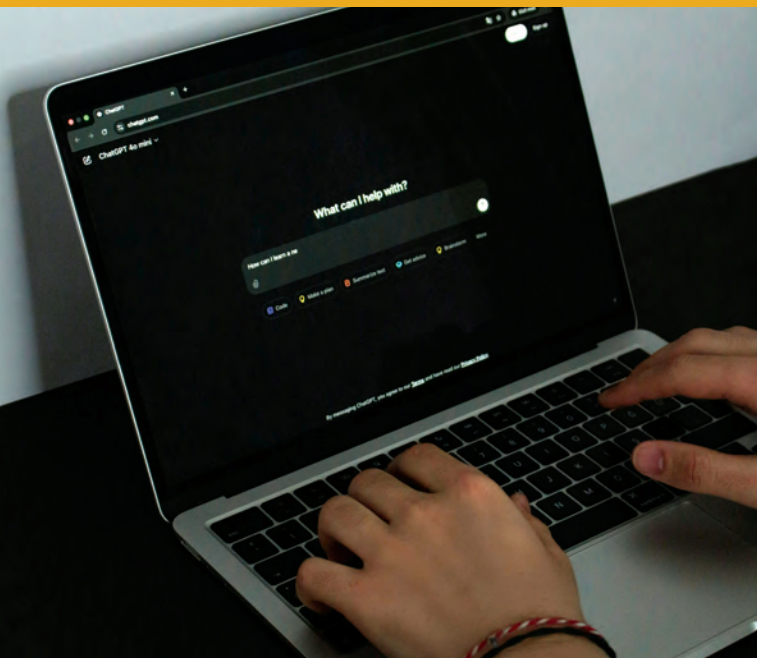


By Chris Austin and Mark Nagel

# FINDING THE ANSWERS



## A Parks and Recreation Professional's Introductory Guide To ChatGPT



**A**rtificial intelligence (AI) has become an integral part of various industries, transforming how professionals work and enhancing their productivity. Parks and recreation professionals, however, might still be unfamiliar with the potential benefits of AI in their field.

Leaders can benefit from using ChatGPT, an AI-powered tool developed by OpenAI, by exploring its applications in the context of parks and recreation. To do so successfully, leaders first need to discover what ChatGPT is, its capabilities, how it differs from search engines, and how it can be effectively utilized in the industry.

### Understanding ChatGPT

ChatGPT is a product of AI technology, combining conversational AI and generative AI. It simulates open-ended conversations and human thinking processes. These conversations can cover a broad range of functions, from answering questions to assisting with content generation and writing. ChatGPT's generative AI capabilities enable it to create original and contextually relevant content, making it a versatile tool beyond mere conversation.

### ChatGPT's Creative Skills

Generative AI, like ChatGPT, operates as a creative computer program. It generates content by learning from a vast number of examples and then creating new and unique content based on this knowledge. For parks and recreation professionals, this means ChatGPT can assist in generating a variety of documents and plans by utilizing its understanding of patterns and conventions.

### ChatGPT Vs. Search Engines

While both ChatGPT and search engines like Google can provide information and answers, they serve different purposes. Search engines retrieve information from existing sources, whereas ChatGPT generates new content. This means parks and recreation professionals can use Google Search to find specific information, but use ChatGPT to generate content, answer complex



questions, and engage in reasoning and critical thinking. For example, Google can look for existing playground plans, but ChatGPT can create a new playground plan based on project specifications.

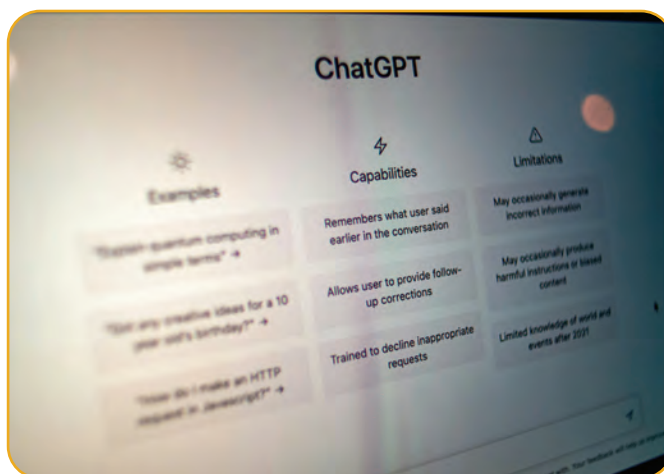
### ChatGPT's Conversational Skills

Conversational AI, like ChatGPT, is designed to interpret and mimic human language, making it simple to chat. ChatGPT has been trained to understand how we talk and provide human-like responses. This conversational aspect allows the user to refine or revise a question, clarify a task, provide the next step, etc. This back-and-forth capability is one of the tool's strengths.

### How To Communicate With ChatGPT

Users interact with ChatGPT by entering prompts in the dialog box. Prompts are the program's input and are typically questions for ChatGPT to answer or tasks for it to perform. The tool's effectiveness, like that of any AI tool, depends on the quality of the prompts provided. Clear and specific prompts yield better results.

Parks and recreation professionals can draw on their expertise to create well-defined tasks for ChatGPT. They will obtain better answers by providing the appropriate context, identifying desired outcomes and constraints,



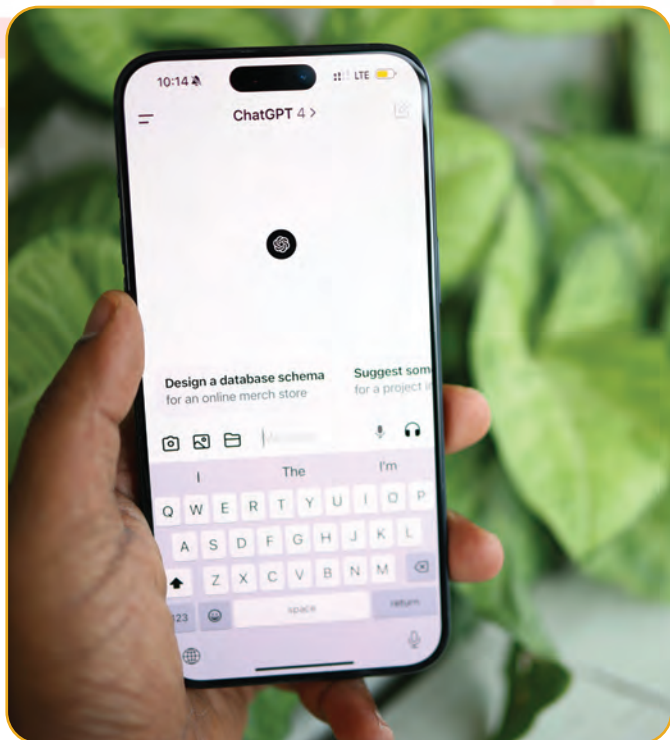
and breaking down complex tasks into simpler steps. Experimenting with different prompt wordings or instructions can also enhance ChatGPT's performance.

### The Role Of Subject-Matter Experts

Parks and recreation professionals might wonder whether tools like ChatGPT will replace their subject-matter expertise. The answer is no; their expertise remains valuable. Specialized knowledge enables these leaders to craft precise prompts that improve ChatGPT's responses. Parks and recreation veterans understand the specific

A large advertisement for Uline featuring a red canopy over a black picnic table in a park setting. The Uline logo is prominently displayed in a red box. Below the logo, the text 'INSTANT CANOPIES' and 'IN STOCK - SHIPS TODAY' is shown. At the bottom, three product categories are highlighted with images: Adirondack chairs, A-frame signs, and trash cans. A red banner in the bottom left corner says 'ORDER BY 6 PM FOR SAME DAY SHIPPING'. The bottom of the ad features a black bar with the text 'COMPLETE CATALOG 1-800-295-5510 uline.com'.





vocabulary and concepts of the field, which is essential for formulating effective questions. Just as important, their expertise better positions them to judge the relevance, accuracy, and sufficiency of ChatGPT's responses.

### Information Security and Reliability

However, there are two major concerns with using generative AI tools like ChatGPT.

The first is the security of the information that goes into it. The second is the reliability of the information that comes out of it.

Remember, generative AI tools like ChatGPT learn from the data their users supply. When one works with sensitive information, it may end up in the tool's knowledge base. Thus, users run the risk of sharing this information in some form with other users. If anyone in an organization uses a generative AI tool, leaders should consider a policy that defines the types of information that can and cannot be used.

The second major concern is how much users can trust a generative AI tool's responses. The "hallucination problem" refers to instances where generative AI tools provide inaccurate or false information. Experts are divided on whether this problem will ever be completely solved. So, for now, it's important to critically evaluate the responses these tools produce.

### Use Case—Designing A Playground

The importance of creating good prompts is illustrated by the following example:

**Initial Prompt:** Design a playground.

**ChatGPT Response:** To create an image of a playground, I'll need more specific details. Can you please describe the kind of playground you're envisioning? For instance, are there any specific features you would like to include, such as slides, swings, a sandbox, or climbing structures? Additionally, do you have a preferred setting, like a park, schoolyard, or urban area? Any particular color scheme or theme? The more details you provide, the better I can tailor the image to your vision!

**Revised Prompt:** Design a playground for children 2-6 years old of all abilities. This playground will be located outdoors in a city park. Specify the types of play equipment it should have and what abilities each type will exercise or develop in the children.

**ChatGPT Response:** Designing an inclusive playground for children aged 2-6 years old in a city park is a wonderful idea. To ensure it caters to children of all abilities, we'll need to include a variety of play equipment that fosters physical, social, sensory, and cognitive development. Here's a design that accomplishes this goal:

#### 1. Accessible Swings

Ability Focus: Physical and sensory development.

Install swings with harnesses and ample back support for children with physical disabilities. Traditional swings with toddler seats should also be available.

#### 2. Adaptive Climbing Structures

Ability Focus: Physical and motor-skills development.

Design low-to-the-ground climbing structures with ramps, handholds, and footholds for kids to build strength and coordination. Ensure some sections are wheelchair-accessible.

#### 3. Sensory Play Area

Ability Focus: Sensory development.

Incorporate sensory panels, textured walls, and musical instruments like xylophones for tactile and auditory stimulation.

#### 4. Inclusive Slides

Ability Focus: Physical and social development.

Include slides with gentle slopes and wide landings to accommodate children with mobility challenges. Add multiple slides of varying heights for different age groups and skill levels, encouraging social interaction and providing a diverse range of play experiences.



Once ChatGPT generates a response, leaders must use their expertise to judge the relevance, accuracy, and efficacy of the suggested plan. However, because of ChatGPT's iterative capabilities, it's simple to modify the task it has been given or to ask for more information, as the next two prompts illustrate. Notice how the playground task has been split into two steps: create a design and build a budget.

**Revised prompt:** Change this plan so it's suitable for children ages 6-10.

**Follow-up prompt:** What should we budget to build such a playground, assuming we already have the land it will be on? Give your answer as a likely range. What should we budget to annually repair and maintain this playground? Again, give your answer as a likely range.

### Trying ChatGPT And Other AI Chatbots

ChatGPT is not the only tool available. Two rival AI chatbots are Google's Gemini and Microsoft's Copilot. The best approach to getting familiar with these tools is

experimenting. Try ChatGPT, Gemini, or Copilot at no cost. All that's required is an internet-connected device, such as a computer, tablet, or smartphone.

Open a preferred search engine and type in some variation of "What do I need to start using \_\_\_\_?" or "Beginner's guide to using \_\_\_\_." These tools are evolving fast, so look for recently published tutorials.

One helpful task for leaders to start with is to describe their job and responsibilities to the chosen chatbot and ask for ways it can assist in performing these tasks more efficiently.

This is just the tip of the iceberg concerning generative AI's potential applications. Incorporating tools like ChatGPT into the parks and recreation toolkit can help professionals harness the power of AI to enhance their work and achieve better outcomes. **PRB+**

***Chris Austin** is a profit-growth pricing expert and a former economics professor at Normandale Community College in Minneapolis, Minn. Reach him at [caustin@priceprofitadvisors.com](mailto:caustin@priceprofitadvisors.com).*

***Mark Nagel**, former Assistant City Administrator for Elko New Market, Minn., contributed to this article.*



## WMS AQUATICS

Sales • Service • Construction

**FIND THE PRODUCTS &  
EXPERTISE YOU NEED**

**800-426-9460**

**[sales@wmsaquatics.com](mailto:sales@wmsaquatics.com)**

**[www.wmsaquatics.com](http://www.wmsaquatics.com)**

**Our Mission: "To uphold a thriving environment for our partners while serving and shaping the future of the Aquatic Industry"**

## EASI-SET<sup>®</sup> BUILDINGS



**EASI-SET PRECAST CONCRETE  
BUILDINGS OUTPERFORM  
TRADITIONAL BUILDING OPTIONS!**

**CONCESSIONS  
DUGOUTS  
PRESS BOXES  
LOCKER ROOMS  
RESTROOMS**

**FIELD HOUSES & MORE!**



**SCAN FOR A FREE QUOTE!**

**[PRECASTBUILDINGS.COM](http://PRECASTBUILDINGS.COM) • 540.439.8911**





# WHAT IF SOMETHING HAPPENS?



## *Taking the lead with insurance for camps and campers*

■ By Mark Ceslowitz ■

Operating a camp means creating memorable, often life-shaping experiences for kids. Underlying these opportunities for fun, adventure, and education, however, is a serious responsibility to protect families and owners alike.

Camps face a wide range of risks, from rare—but devastating—property loss to more common issues such as camper cancellations due to injury, illness, or a change in family plans. While property and liability insurance is generally standard, many camp leaders don't realize that traditional commercial insurance typically does not cover these participant-level disruptions, and that impacts everyone.

Surprisingly, the summer camp industry utilizes less than 10% of the available insurance capacity in the market today. While the broader travel industry—including airlines, cruise lines, and tours—routinely offers insurance to its customers, many camps do not. According to the U.S. Travel Insurance Association, travel insurance is a \$5-billion industry in the U.S. The commercial insurance market for summer camps is just a fraction of that. For camps, this means missed opportunities to not only manage financial risk but also improve family satisfaction.





It's important to ask the following questions and offer clear guidance for camp directors and decision-makers on essential insurance considerations—while underscoring how proactive communication with families about participant insurance can set a camp apart from the rest:

- What role can insurance play in a camp's reputation and a family's peace of mind?
- How can understanding different types of coverage lead to smoother operations and stronger relationships with parents?
- What are the hidden risks—and missed opportunities—when camps don't clearly communicate the importance of participant insurance?

## UNDERSTANDING THE TWO SIDES OF CAMP INSURANCE

Conversations about camp insurance refer to two distinct categories:

### ■ Camp Business Insurance:

Covers an organization, property, staff, and liability.

### ■ Participant (or Individual)

**Insurance:** Covers campers or staff for accidents, illness, trip cancellations, and, with the best policies, even psychological health issues that are common when kids are separated from their families.

Business insurance is important for once-in-a-decade events—think fires, abuse claims, or cyber liability. But when Johnny breaks a leg, or Sally

develops anxiety the week before camp starts, business coverage won't help. That's where participant travel insurance fills a critical gap.

Families typically must purchase participant insurance separately. These plans can cover medical emergencies, travel delays, lost baggage, trip cancellations, and even uninhabitable destinations due to power outages, mandatory evacuations, or wildfires. Some policies include Cancel For Any Reason (CFAR) or Interrupt For Any Reason (IFAR) benefits, allowing families to change plans, even due to unexpected issues like a poor air quality index (AQI) or a last-minute family event.

And while most travel insurance policies still don't cover psychological conditions, a few do. That can make a

**ESS UNIVERSAL**  
HEAVY DUTY BUNK BEDS



**GORILLA STRONG.  
BED BUG SMART.**



**616.229.0597**  
**HEAVYDUTYBUNKBEDS.COM**

**FAMILY OWNED | EST. 2014**





big difference. Imagine a 15-year-old setting off for a \$9,000 sleepaway camp only to experience a debilitating anxiety attack the day of departure. Even if the teen's family has CFAR insurance, the policy typically ends two days before departure. With mental health-inclusive insurance, that family won't be left absorbing the financial loss by medically documenting the illness. What's more,

there won't be a dispute between the family and the camp about a potential refund. Everyone is protected.

In addition to covering individuals directly, participant insurance also extends a camp's risk management reach across geographic boundaries. If, for example, a camp located in the Northeast attracts 10% of its campers from Florida, and a hurricane hits Florida right before camp begins,

families affected may be eligible to cancel under a covered reason—even if the physical camp site is untouched. Events like this do happen. Business insurance won't cover such geographically distant disruptions, but camper insurance can.

### HOW CAMPS CAN SHOW LEADERSHIP

Families generally don't know they can purchase their own insurance or understand the importance of it. By highlighting the value of participant coverage, leaders demonstrate that a camp is committed to camper well-being, family peace of mind, and long-term trust.

Daniel Lorenzo, Chief Revenue Officer with management platform Campminder, says, "We see strong family adoption when insurance is clearly presented during registration. It allows camps to offer support without added administrative work."

Camps can easily integrate insurance into the registration process in several ways. Think of the "HAIR" acronym:

- **Hyperlinks:** Add a link to the camp's website, invoices, or emails.
- **API Integration:** Enable participant insurance through the registration platform.
- **Iframe Quote Tools:** Embed a quote tool on the website.
- **Roster Billing:** Invoice families directly and remit a roster of sales with an insurance administrator.

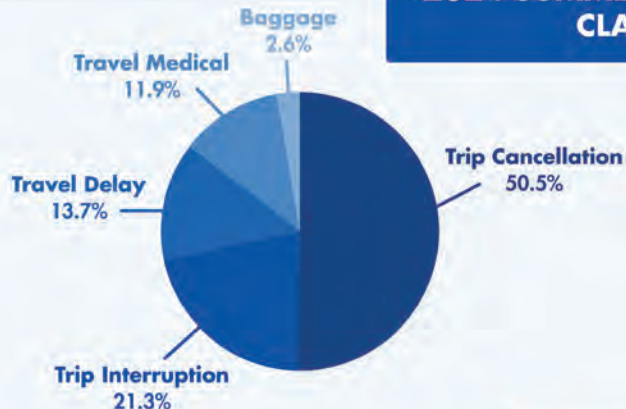
Giving families insurance options isn't just a nice gesture; it can help a camp stand out in a crowded marketplace. Families that feel supported and informed are more likely to return and recommend a program to others.

No matter what the offering is, always encourage families to carefully

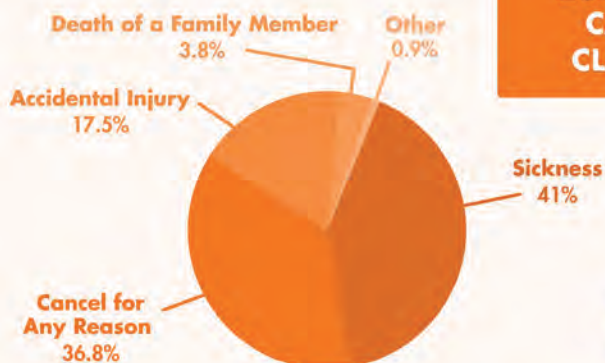
## IS INSURANCE FOR SUMMER CAMP OR YOUTH TRAVEL WORTH IT?

*A Look at the Most Common Reasons Parents Use Their Policies*

### 2024 SUMMER PROGRAM CLAIMS BY TYPE



### 2024 DETAILS OF CANCELLATION CLAIMS BY TYPE



*Source: Examination of claims made by parents of 10,000 TravMark-insured campers and travelers in 2024*





review the full plan details before purchasing.

### WHY BOTH TYPES MATTER

While business insurance may be required by law or accreditation standards, participant insurance is often assumed or entirely overlooked. That leaves families—and a camp—vulnerable.

Say a camper is injured on a hike and has to leave camp. A liability policy may only respond if the camp is found negligent. However, participant insurance provides a more immediate safety net, helping cover out-of-pocket costs, including unused camper days, reducing tension, avoiding disputes, and possibly shielding a camp from a liability claim.



## EXECUTIVE DEVELOPMENT PROGRAM

INDIANA UNIVERSITY  
School of Public Health  
Bloomington

April 19-22, 2026

**PRB+ Subscribers Save \$30.**  
**Register Today.**  
**For More Information: [www.iuedp.org](http://www.iuedp.org)**  
**or 812-856-1068**

This program is for individuals who are in the parks and recreation profession at any level.

Previous IUEDP classes have included practitioners from:

- Municipal agencies and/or State Parks
  - Non-profit organizations
  - Elected city officials
- Individuals in management, leadership or board positions will benefit from IU EDP

**Family Owned & Operated  
since 1924**



[www.bourdons.com](http://www.bourdons.com)

**1-800-231-5468 [sales@bourdons.com](mailto:sales@bourdons.com)**





And what happens if a job loss means a family can no longer afford the camp costs they've committed to paying?

"Our families appreciate knowing they are protected even if plans change," says Mike Stillson, Executive Director of Valley Trails Camp, one of the first day camps in the U.S. to offer a custom travel-insurance plan to its families. "It not only eases our efforts to gain commitments, but it sends the message that we care deeply about their family's well-being year-round, not just on the days their kids are here."

### INSURANCE AS A RISK-MANAGEMENT TOOL

When launching new programs or planning off-site excursions, evaluate insurance early:

- Are adventure activities covered?
- What about covering international campers?
- Is there coverage for psychological issues, homesickness, or a parent's job loss?

Answering these questions helps ensure that programming is protected without compromising safety or innovation. Partnering with experienced advisors also allows leaders to tailor policies to a camp's needs and educate the staff about how to respond in the event of a claim.

### SPECIAL CONSIDERATIONS FOR CAMP OPERATORS

Not all risks are obvious. The following are a few areas in which insurance is frequently misunderstood or underused:

- **Transportation:** Ensure proper insurance for any camp-owned or third-party vehicles.



- **International Travel:** Confirm coverage for medical evacuation and travel medical needs.

- **Medical Staff:** Understand where camp-employed or volunteer healthcare providers fall in terms of liability.

- **Volunteer Programs:** Make sure supplemental accident coverage fills any gaps in workers' compensation.

Insurance can also complement technology solutions, such as incident-reporting apps or digital waivers, by creating a more integrated risk-management framework.

### INSURANCE CAN ELEVATE THE CAMPER EXPERIENCE

Presenting insurance options builds loyalty and increases retention. Camp leaders who have seen this firsthand say it's one of the most appreciated resources they offer. It also minimizes the chance of refund disputes or reputational damage when families cancel or experience disruption.

"When my daughter's anxiety meant she couldn't complete her travel program, we were heartbroken for her—but also relieved the policy we purchased covered it," says Eric, a New Jersey parent whose family used a policy that included mental-health coverage. "That one detail helped

make a difficult experience a little easier to take."

When something goes wrong, but a plan is in place, families will remember how a camp handled it. That peace of mind is priceless.

### FINAL THOUGHTS: BE THE CAMP THAT CARES

Insurance isn't just about protection—it's about leadership and trust. The camps that thrive are those that treat insurance as part of a broader commitment to transparency, family engagement, and risk management.

Now that this year's summer camp season is wrapping up, it's the perfect time to reflect:

- What worked well?
- What surprised you?
- What would you do differently next year?

As leaders review this season's takeaways and begin planning for the next, it's an ideal moment to revisit insurance policies and refresh the camp's communication strategy.

Make insurance a core part of the story—not just a fine-print footnote in a registration packet.

*Note: Families should always read and understand travel-protection plan documents before purchasing coverage to understand benefits, terms, and exclusions. PRB+*

**Mark Ceslowitz** is the President of TravMark, a specialized insurance provider for camps, educational travel, and youth programs. He has 25 years of experience helping camp leaders navigate complex insurance decisions with clarity and confidence.





# Join Us For ParkFest 2025

VIRTUAL CONFERENCE

OCTOBER 28-30, 2025

**Attend the nation's best virtual event  
for parks & recreation pros!**

- Attend for FREE from wherever you choose.
- Get exclusive professional development.
- Network with peers, thought leaders, and vendors.
- Discover innovative ideas you can't find anywhere else.

**Registration opens September 1.**

**Scan the QR code to learn more  
and secure your spot.**





# Truth For Youth

## How camp programs serve as moral and interpersonal beacons



**H**igh-quality, summer youth programs combine five elements that no other experience does:

- Community Living
- Young Adult Leaders
- Beautiful Natural Settings
- Separation from Home
- Recreational Activities

To the mid-19th-century educators who organized the first overnight camps in North America, this five-faceted educational gem solved two problems: It was the ideal complement to traditional classrooms, and it was the bucolic antidote to urban perils. Today, camps and other youth-serving organizations still solve those problems, along with several new ones, such as excessive, recreational screen time and the glut of realistic but phony online content.

To support the important work of all PRB+ readers, regardless of political persuasion, this article invites leaders to consider how effectively their youth-serving organization provides the five elements above. This article also encourages all readers to buttress their mission against whatever forces may erode it. I hope you find enlightening my observations about how

American politics has shaken young people. I also hope my observations prompt you to consider how your program provides moral and interpersonal stability.

### Risks And Benefits

During the Industrial Revolution in the U.S.—roughly 1850-1920—children were often treated as commodities, forced to work on farms and in factories at young ages, typically in toxic conditions. Many adults recognized that elements of industrialized America were unhealthy for children. According to a recent United Nations report, “As the country rapidly industrialized after the Civil War and many families relocated from the country into loud, crowded cities, [parents became concerned

about] the detrimental effects of urbanization. Suddenly, instead of spending their days outside working on the family farm, kids were languishing in cramped apartments or enduring long shifts in dark factories.”

Even before they were old enough to work, children’s lives were at risk during the Industrial Revolution. In the 1860s, about 340 out of every 1,000 children did not make it to their

fifth birthday.<sup>2</sup> In 2022, that number is just 7 in 1,000. Scientific and clinical advances in disease prevention and medical treatments account for most of that improvement.







Laws passed in the 1930s and 1940s, limiting child labor and requiring school attendance, also helped.

Summer youth programs also offered a partial antidote. According to history professor Michael Smith, “There was a lot of anxiety about what industrialization was doing to the character of children.”<sup>3</sup> A few months away in nature, adults hoped, “would help children reclaim the physical and spiritual heritage of their hardworking pilgrim and pioneer forebears.”<sup>4</sup> Although summer camps may not have directly improved children’s chances of survival, parents realized that camps excelled at shaping children’s character. At the turn of the 20th century, there were fewer than 100 organized summer camps in the U.S.; by 1918, there were more than 1,000. Today, there are about 7,000 overnight camps, 5,000 day camps, and 10,000 parks & rec departments<sup>5</sup> across the country.

## Good And Bad

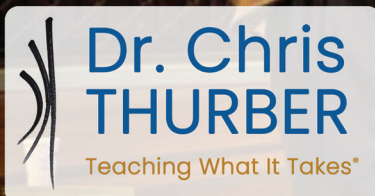
The growth of camps and other summer youth programs gives us plenty to feel good about. Over the past 160 years, monumental advances in healthcare, education, and character-building experiences have helped children and adolescents in this country live longer, happier, and more productive lives than their Civil War-era ancestors.

Tragically, the first half of 2025 has been catastrophic for health care, education, and character-building experiences. For example, in fewer than 40 days, the current administration terminated \$1.81 billion in National Institutes of Health grants<sup>6</sup> and signed an executive order that “authorized the Secretary of Education to take all necessary steps to facilitate the closure of the Department of Education.”<sup>7</sup> The biomedical research that has fueled advances in healthcare, along with the educational policies and programs that have ensured all American children and adolescents have access to adequate nutrition and public education, now risk extinction. Experts offer bleak forecasts for the future of American children’s health and education.<sup>8</sup> At a time when international competition is keener than ever, America is self-immolating two cornerstones of its leadership.

As for character-building, which depends on both healthy risk-taking and sterling role models, youth have been hard-pressed to find good examples in our most

## KEYNOTES, COACHING, and WORKSHOPS for PEAK PERFORMANCE

- Overnight & Day Camps
- Parks & Rec Departments
- Boarding & Day Schools
- C-Suite Executive Teams



Scan QR to see a list of Chris’s most popular Workshop Topics





prominent public figures. Be it politics, the arts, sports, or the media, people in positions of power have demonstrated the full spectrum of bad behavior—everything from name-calling and finger-pointing to assault of all kinds, incitement of violence, and criminal conviction. Individuals who have been positioned as leaders in their respective industries and vaunted as beacons of American society have proven time and again that they can't be trusted, let alone admired. Yet, many of these so-called VIPs have faced only minor setbacks, if any at all; some have ridden the wave of their misbehavior to their biggest successes.

This has been frustrating and bewildering for many adults. Imagine how baffled our young people are. They have been witnessing it all.

## Confusion And Clarity

The elections of 2016 and 2024 confused and upset many young people. Since preschool, these kids have known about the existence of bullies. However, watching many politicians bully their opponents—and win—has made little sense.<sup>9</sup> Such endorsements have felt jarringly inconsistent with the way most young people understood morality (personal beliefs about right and wrong) and justice (fairness and the application of rules and laws within a society). Some children and adolescents even felt betrayed because the same adults who taught them about morality and justice ignored those principles when voting.

Amid this domestic confusion and the chaos of wars around the world, overnight summer camp and other youth-serving organizations must be brighter beacons than ever. The five-faceted gem of community living; young adult leaders; beautiful natural settings; separation from home; and recreational activities provides—as it always has—the following stable pillars:

- Relief from the stressful polarization of social groups
- Mission-driven, not market-driven communities
- Immersion in the restorative properties of nature
- Supportive role models whose morals prioritize kindness
- Opportunities for cooperation, reconciliation, and healthy risk-taking
- Interpersonal connection devoid of electronic distortion

In an era of perplexing politics and computer-generated text and images, perhaps no life skill is more important than the ability to discern fact from fiction. If we want young people to be able to distinguish what's real from what's really enticing—so they can make wise choices and offer meaningful contributions to the world—we must continue offering them opportunities to *make* choices and *create* contributions in our wholesome and supportive programs.

## Hope And Growth

A couple of years ago, I wrote an op-ed for the *Boston Globe* that distinguished between healthy and unhealthy parental pressure, specifically in the context of college admissions. I expected blowback in the online comments, and I got it. But much of it was not about the substance of my article, which implored parents to broaden their definition of success beyond admission to Ivy League universities. Instead, people objected to the image of the young person the *Globe's* editors had inserted to illustrate the plight of a highly pressured student. It was an AI-generated teenager whose gender and ethnicity were intentionally ambiguous. Readers so disliked that it was AI-generated that I worried its presence somehow made my thesis less believable. It was an uncomfortable lesson in people's strong preference for authentic aesthetics.

However bewildering the world *outside* your youth-serving organization may be, the world *inside* your organization can provide the authenticity essential for human thriving. By stripping away electronic technology and getting back to basics, summer youth programs provide reassuring moral and interpersonal anchors to adults



and children alike. Indeed, if you direct your program with integrity by staying true to your mission, the young people you serve will have profound

experiences that teach them skills markedly different from what plays out in news headlines and on social media. And as more of those young people learn more respectful ways to treat others, healthier ways to meet one's needs, and better ways to support others' growth, they prepare themselves to be amazing leaders, parents, partners, and friends.

When your frontline staff members lead by example, when they show what kindness, inclusion, empathy, and respect look like in games, at meals, in friendships, and in conflicts, they are not simply showing kids how to have fun. They are also showing kids how to live. **PRB+**




**Dr. Christopher Thurber** is a clinical psychologist, father, and professional educator who has presented keynotes and workshops on five continents. He is the author of two books for parents—*The Summer Camp Handbook* and *The Unlikely Art of Parental Pressure*—and two video series for young people: *Prep4Camp* and *Prep4School*, both of which are hosted on [ReachBoarding.com](https://ReachBoarding.com). Learn more at [DrChrisThurber.com](https://DrChrisThurber.com).



## Footnotes

- 1 Stimpson, A. (2024). "The Anxious History of the American Summer Camp", Atlas Obscura, retrieved June 16, 2025 from <https://www.atlasobscura.com/articles/american-summer-camp-history>.
- 2 United Nations Department of Economic and Social Affairs (2019).
- 3 Stimpson, A. (2024). "The Anxious History of the American Summer Camp", Atlas Obscura, retrieved June 16, 2025 from <https://www.atlasobscura.com/articles/american-summer-camp-history>.
- 4 Ibid.
- 5 Sources: <https://acacamps.org> and <https://nrpa.org>.
- 6 Source: <https://www.sciencenews.org/article/nih-grant-cuts-science-funding-billions>.
- 7 Source: <https://whitehouse.gov/fact-sheets/>.
- 8 Cutler, D. M. and Glaeser, E. (2025). "Cutting the NIH—The \$8 Trillion Health Care Catastrophe". JAMA Health Forum. 6(5):e252791.
- 9 Although young people's political views usually mirror their parents' views, my full-time work as a clinical child and adolescent psychologist has provided ample evidence, over the past 10 years, that young people's confounding and upsetting feelings exist across the political spectrum. Some readers may misinterpret my motivation for sharing this fact and other factual accounts, but I wish only to shed light on the importance of the work you do.





## Park Life Made Easier

With Campspot, you get easy-to-learn software made just for parks like yours.

- ✓ Simple tools your seasonal staff will love
- ✓ One place to manage sites, bookings, and guests
- ✓ Helpful reports for city and county visibility
- ✓ No software cost—your guests cover it
- ✓ ADA-compliant booking site included

**Book a Free Demo Today**

[software.campspot.com](https://software.campspot.com)

# ALL·A·BOARD<sup>INC.</sup>

## CONTRACT FURNITURE

[www.allboardinc.com](http://www.allboardinc.com)






**For Quotes Call 800-882-2753**



**395 Dabbs House Road • Richmond, VA 23223**  
**1-800-882-2753 • email: allboardinc@aol.com**



# Advertiser Index

PARKS + RECREATION ADVERTISERS	PARKS + RECREATION ADVERTISERS	PARKS + RECREATION ADVERTISERS
<b>3 American Ramp Company</b> <a href="http://www.bicycle-playgrounds.com">www.bicycle-playgrounds.com</a> (417) 206-6816	<b>124 John Deere</b> <a href="https://www.JohnDeere.com/BuyLocal">https://www.JohnDeere.com/BuyLocal</a> (800) 358-5010	<b>107 W.E. Chapps, Inc.</b> <a href="http://www.wechapps.com">www.wechapps.com</a> (800) 816-2427
<b>103 Aquatic Adventures International, Inc.</b> <a href="http://www.aquacycles.com">www.aquacycles.com</a> (800) 970-2688	<b>23 Land Pride</b> <a href="http://www.landpride.com">www.landpride.com</a> (785) 823-3276	<b>123 Whitewater West Industries</b> <a href="http://www.whitewaterwest.com/en/create">www.whitewaterwest.com/en/create</a> (604) 273-1068
<b>107 Belson Outdoors, Inc.</b> <a href="http://www.belson.com">www.belson.com</a> (800) 323-5664	<b>15 Landmark Studio &amp; Design</b> <a href="https://landmarkstudio.com">https://landmarkstudio.com</a> (262) 409-4750	<b>111 WMS Aquatics</b> <a href="http://www.wmsaquatics.com">www.wmsaquatics.com</a> (800) 426-9460
<b>6-7 Burke Playgrounds</b> <a href="http://www.bciburke.com/play">www.bciburke.com/play</a> (800) 356-2070	<b>2 Landscape Structures</b> <a href="http://www.playlsi.com/play-is-life-changing">www.playlsi.com/play-is-life-changing</a> (888) 438-6574	<b>107 Wundercovers</b> <a href="http://www.wundercovers.com">www.wundercovers.com</a> (775) 400-2883
<b>121 Campspot</b> <a href="https://software.campspot.com">https://software.campspot.com</a> (616) 226-5500	<b>21 Lastec Turf Equipment</b> <a href="http://www.lastec.com">www.lastec.com</a> (800) 515-6798	
<b>111 Easi-Set Worldwide</b> <a href="http://www.easisetbuildings.com">www.easisetbuildings.com</a> (540) 439-8911	<b>105 ParknPool Corp</b> <a href="http://www.parknpool.com">www.parknpool.com</a> (877) 777-3700	
<b>17 FieldTurf, A Tarkett Sports Company</b> <a href="https://fieldturf.com/en">https://fieldturf.com/en</a> (800) 724-2969	<b>105 Playmax Surfacing, Inc.</b> <a href="http://www.playmaxsurfacing.com">www.playmaxsurfacing.com</a> (951) 250-6039	
<b>105 Gyms for Dogs - Natural Dog Park Products</b> <a href="http://www.GymsForDogs.com">www.GymsForDogs.com</a> (800) 931-1562	<b>9 Public Restroom Company</b> <a href="http://www.publicrestroomcompany.com">www.publicrestroomcompany.com</a> (888) 888-2060	
<b>5 Hammer-Head Patented Performance, Inc.</b> <a href="http://www.hammerheadvac.com">www.hammerheadvac.com</a> (561) 451-1112	<b>13 R.J. Thomas Mfg./ Pilot Rock Park Equipment</b> <a href="http://www.pilotrock.com">www.pilotrock.com</a> (712) 225-5115	
<b>107 Hydrel</b> <a href="https://hydrel.acuitybrands.com">https://hydrel.acuitybrands.com</a> (888) 834-5684	<b>15 Salisbury Industries</b> <a href="http://www.lockers.com">www.lockers.com</a> (323) 846-6700	
<b>115 Indiana University</b> <a href="http://www.iuedp.org">www.iuedp.org</a> (812) 856-1068	<b>109 Uline, Inc.</b> <a href="http://www.uline.com">www.uline.com</a> (262) 612-4200	
		<b>CAMP ADVERTISERS</b>
		<b>121 All A Board, Inc.</b> <a href="http://www.allaboardinc.com">www.allaboardinc.com</a> (800) 882-2753
		<b>115 Bourdon's Institutional Sales, Inc.</b> <a href="http://www.bourdons.com">www.bourdons.com</a> (800) 231-5468
		<b>113 ESS Universal (Heavy Duty Bunk Beds)</b> <a href="https://heavydutybunkbeds.com">https://heavydutybunkbeds.com</a> (616) 229-0597
		<b>119 Prep4Camp</b> <a href="http://prep4camp.com">http://prep4camp.com</a> (603) 557-8111





Catch us if you can!

I've never experienced anything like it

♡ 👁 ▽

♡ 👁 ▽

# MAKE BETTER STORIES

Unbelievable speed

Let's go again

♡ 👁 ▽

♡ 👁 ▽

♡ 👁 ▽

♡ 👁 ▽



Create the guest stories yet to be told.  
Invest in experiences worth sharing,  
season after season.

[www.whitewaterwest.com/en/create](http://www.whitewaterwest.com/en/create)



WHITEWATER®

EST. 1980



# You focus on the job at hand, we'll focus on the paperwork.



---

## Welcome to procurement made easy.

For decades, procurement professionals like you have relied on John Deere to meet—and exceed—equipment needs. With no-hassle Contract Options, it's easy to see why. You focus on the job at hand, we'll focus on the paperwork. Our frictionless process gives you peace of mind, not headaches. Enjoy affordable prices on a variety of high-quality equipment for every task. Visit your local John Deere dealer to get started today.

To find out how, go to [www.JohnDeere.com/BuyLocal](http://www.JohnDeere.com/BuyLocal)



**JOHN DEERE**